

# *PASUMINE GOVEDA*

Prof. dr.sc. I. Karadjole



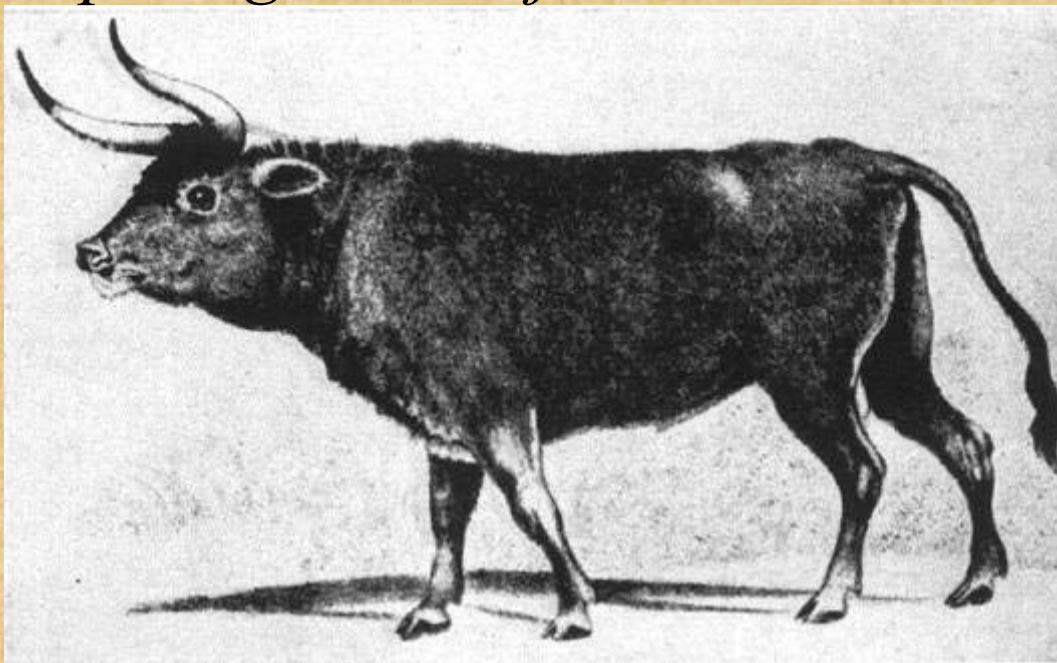


# PASMINE GOVEDA

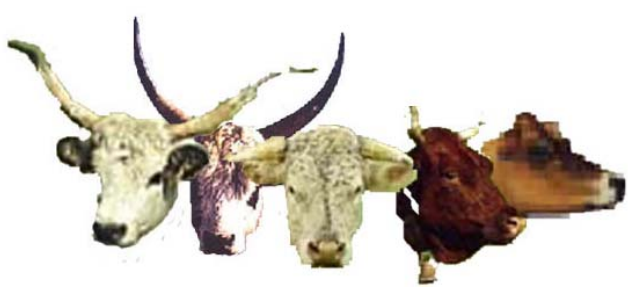


## Divlji izvorni oblici domaćih goveda

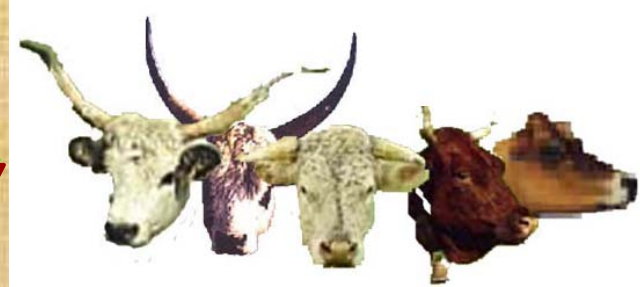
1. *Bos primigenius bojanus*



2. *Bos brachyceros europaeus* Adametz



# *PASMINE GOVEDA*

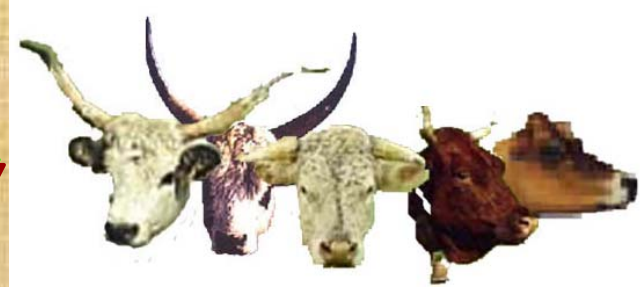


## PASMINE GOVEDA

1. Kombinirane pasmine
  - simentalsko govedo
  - smeđe govedo
  - sivo tirolsko govedo
  - pincgavsko govedo
2. Mliječne pasmine
  - holstein-frizijsko govedo
  - jersey govedo
  - crveno dasko govedo



# PASMINE GOVEDA

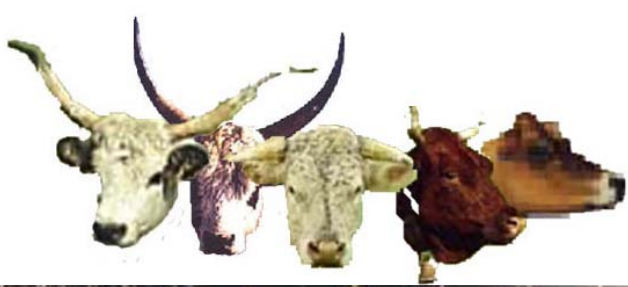


## 3. Mesne pasmine

- angus govedo
- hereford govedo
- shorthorn govedo
- charolais govedo
- limousin govedo
- belgijsko bijelo-plavo govedo

## 4. Izvorne pasmine

- buša
- slavonsko-srijemsko podolsko govedo
- istarsko govedo (istarski podolac)



# PASMINJE GOVEDA



Simentalški bikovi





# PASMINJE GOVEDA



Simentialske krave



## Daughters



Tochten von Stellen (Seite 16)



Tochten von Jutos (Seite 12)



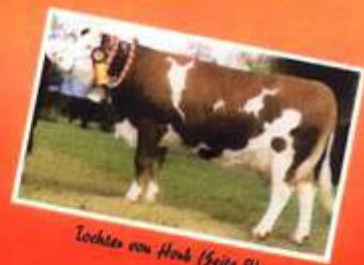
Tochten von Robell (Seite 17)



Tochten von Renger (Seite 16)



Tochten von Stronell (Seite 22)



Tochten von Houb (Seite 9)



Tochten von Houb (Seite 9)



Tochten von Renames (Seite 16)



## **PASMINE GOVEDA**



# POŽELJNE OSOBINE SIMENTALSKE PASMINE GOVEDA

- Tip goveda – kombinirani (meso-mlijeko)
- Zrelost pasmine – srednje zrela
- Težina uzrasle krave (kg) – 650-700
- Visina grebena krave (cm) – 136-140
- Dob kod oplodnje (mj.) – 14-16
- Dob kod prvog teljenja (mj.) – 23-25
- Trajanje proizvodnog vijeka krave (god) – 6
- Težina uzraslog bika (kg) – 1100-1300
- Visina grebena bika (cm) – 150-157

Izvor: Program gojidbenog stvaranja goveda u Hrvatskoj, 1991.



## ***PASMINE GOVEDA***



### POŽELJNE OSOBINE SIMENTALSKE PASMINE GOVEDA

- Porodna težina teladi (kg) – 41-44
- Završna težina u tovu (kg) – 550-600
- Dnevni prirast (g) – 1200-1300
- Neto dnevni prirast (g) – 800-850
- Utrošak HJ za 1 kg prirasta – 5,8-6,0
- Randman toplih polovica (%) – 60-63
- Udio mišića u trupu (%) – 65 i više

Izvor: Program gojidbenog stvaranja goveda u Hrvatskoj, 1991.





## **PASMINE GOVEDA**



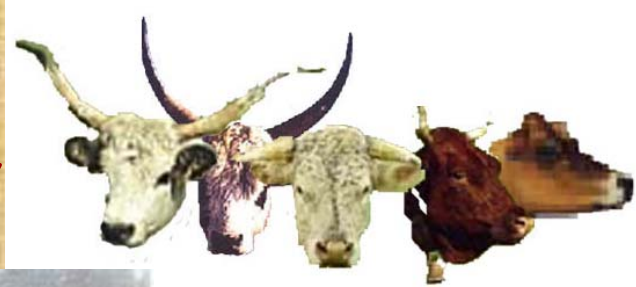
# POŽELJNE OSOBINE SIMENTALSKE PASMINE GOVEDA

- Laktacijska proizvodnja (305 dana) uzrasla krava
  - Mlijeko (kg) - 5000
  - Mast (%) - 4,0
  - Bjelančevine (%) - 3,6
- Proizvodnja 100 dana laktacije – mlijeko (kg) - 2000
- Indeks vimena odrasle krave – 43-45
- Istjek mlijeka (kg/min.) – 1,7-1,9
- Kapacitet uzimanja suhe tvari (kg/100 kg žive težine) (%) – 3,5
- Broj teljenja (laktacija u životu) – 6
- Interval između teljenja (dana) - 370

Izvor: Program gojidbenog stvaranja goveda u Hrvatskoj, 1991.



# PASVINE GOVEDA

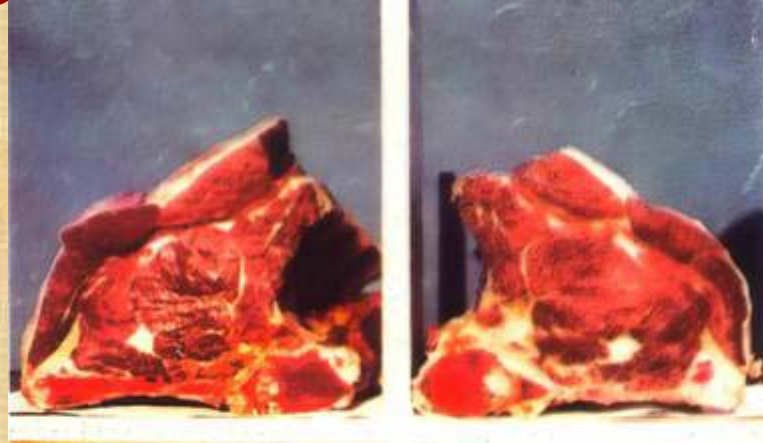


Simentalaska junad





# PASMINE GOVEDA



Simentalac-kvaliteta mesa





# PASMINE GOVEDA



**Masa tijela na kraju tova, udio kostiju, mišića i masti u trupovima simentalске junadi iz progenog testa u razdoblju od 1984. do 2001. godine (n = 917)**

<b>OBILJEŽJE</b>	<b><math>X \pm s_x</math></b>	<b>s</b>	<b>min.</b>	<b>maks.</b>	<b>KV%</b>
<b>MASA TIJELA-kg</b>	557,73 ± 1,78	53,93	385,00	729,00	9,67
<b>KOSTI-%</b>	19,21 ± 0,10	3,02	12,45	30,37	15,72
<b>MIŠIĆI-%</b>	61,91 ± 0,15	4,41	41,00	78,00	7,13
<b>MAST-%</b>	14,13 ± 0,11	3,37	4,69	26,61	23,89

Izvor: Magistarski rad, I. Štoković, 2003.



# PASMINE GOVEDA



## OBITELJSKA GOSPODARSTVA / FAMILY FARMS

PRIKAZ PO PASMINAMA I REDNOM BROJU LAKTACIJE  
 REVIEW BY BREED AND ORDINAL NUMBERS OF LACTATION  
 Izvješće HSC, 2005.

Pasmina / Laktacija	Ukupno zaključene laktacije	Standardna laktacija – 305 dana					
		Broj laktacija	Mlijeko kg	Mast kg	Mast %	Protein kg	Protein %
Breed / Lactation	Total recorded lactations	Production in 305 – day lactation					
		No. calc. lactation	Milk, kg	Fat, kg	Fat, %	Protein, kg	Protein, %
<b>Simentalac / Simmental</b>							
I.	6724	6389	4149	169	4,08	138	3,33
II.	4170	3945	4437	182	4,10	150	3,39
III.	3088	2932	4645	189	4,06	156	3,37
IV. i više	8882	8282	4547	185	4,07	152	3,35
<b>Uk.–Pros. / Tot.–Aver.</b>	<b>22864</b>	<b>21548</b>	<b>4422</b>	<b>180</b>	<b>4,08</b>	<b>148</b>	<b>3,35</b>



# ***PASMINJE GOVEDA***



## Proizvodnja mlijeka austrijskih umatičenih simentalских krava

<b>Year</b>	<b>Lacta- tion</b>	<b>Milk kg</b>	<b>Fat %</b>	<b>Protein %</b>	<b>Fat &amp; Protein kg</b>
2002	215.405	6.074	4,18	3,44	463
2001	216.196	5.975	4,15	3,43	453
<b>Change</b>	- <b>791</b>	+ <b>99</b>	+ <b>0,03</b>	+ <b>0,01</b>	+ <b>10</b>

Izvor: [www.fleckvieh.at](http://www.fleckvieh.at), 2004.



# PASMINE GOVEDA



## Prinosi mlijeka bikovskih majki u Austriji

Year	Number	Milk kg	Fat %	Protein %	Fat & Protein	TMI	MW
					kg		
2002	2291	8243	4,34	3,55	649	114,2	113,9
2001	2252	7987	4,35	3,53	628	112	111,6
<b>Breeding progress</b>	<b>39</b>	<b>256</b>	<b>-0,01</b>	<b>0,02</b>	<b>21</b>	<b>2,2</b>	<b>2,3</b>

Izvor: [www.fleckvieh.at](http://www.fleckvieh.at), 2004.



# PASMINE GOVEDA



## Prinos mlijeka simentalских krava u prvoj laktaciji u Austriji

Year	Lactation	Milk kg	Fat %	Protein %	Fatt & Protein kg
2002	61.354	5.497	4,19	3,43	419
2001	61.193	5.417	4,15	3,42	410
<b>Change</b>	<b>161</b>	<b>80</b>	<b>0,04</b>	<b>0,01</b>	<b>9</b>

Izvor: [www.fleckvieh.at](http://www.fleckvieh.at), 2004.





***PASMINE GOVEDA***

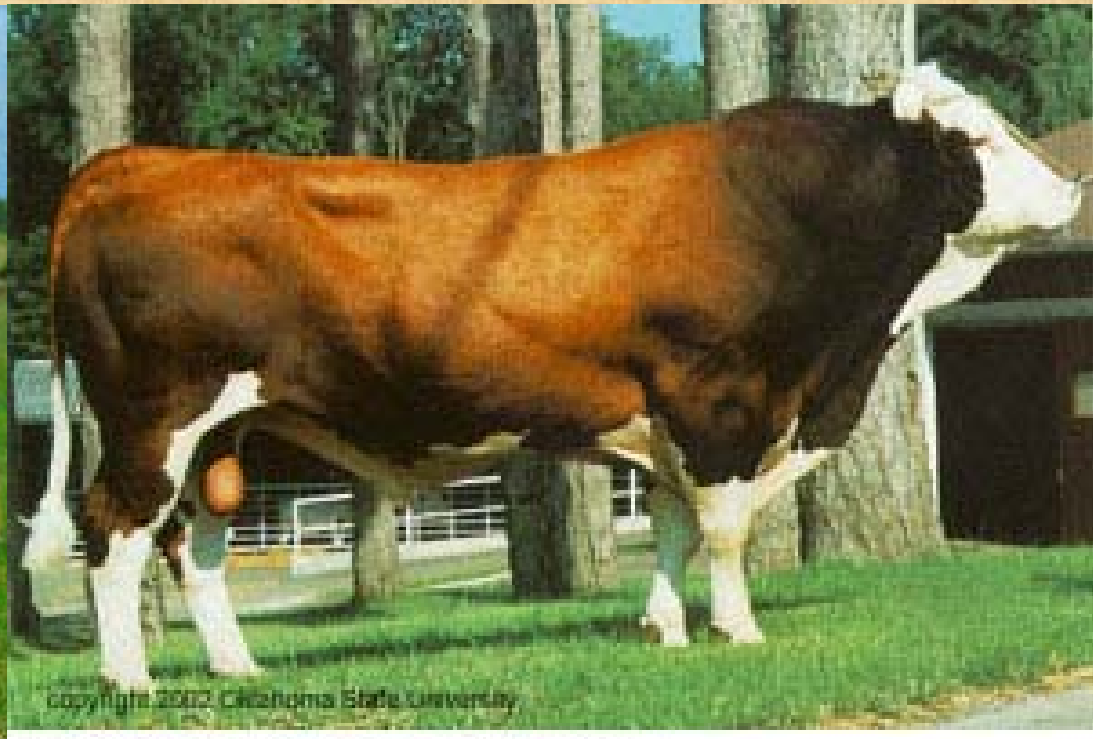


## Montbeliard



copyright 2002 Oklahoma State University

provided by Stephane Fitamant



copyright 2002 Oklahoma State University

provided by Stephane Fitamant

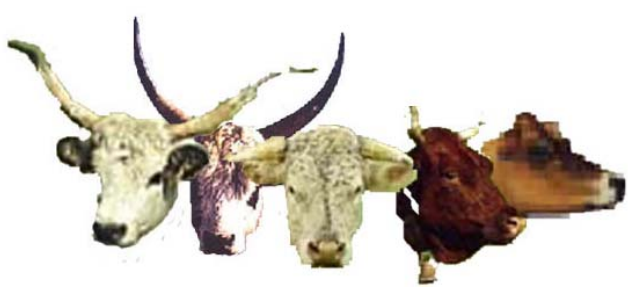


***PASMINE GOVEDA***



Abondans





# *PASMINE GOVEDA*



Simentalske krave u Francuskoj (Pie rouge de l'est)





***PASMINJE GOVEDA***



Smeđe govedo





# *PASMINE GOVEDA*



## POŽELJNE OSOBINE SMEĐE PASMINE GOVEDA

- Tip goveda – kombinirani (meso-mlijeko)
- Zrelost pasmine – srednje zrela
- Težina uzrasle krave (kg) – 600-700
- Visina grebena krave (cm) – 134-138
- Dob kod oplodnje (mj.) – 15-17
- Dob kod prvog teljenja (mj.) – 24-26
- Trajanje proizvodnog vijeka krave (god) – 7
- Težina uzraslog bika (kg) – 1100-1200
- Visina grebena bika (cm) – 150-155



## *PASMINE GOVEDA*



### POŽELJNE OSOBINE SMEĐE PASMINE GOVEDA

- Porodna težina teladi (kg) – 39-40
- Završna težina u tovu (kg) – 450
- Dnevni prirast (g) – 1150-1250
- Neto dnevni prirast (g) – 750-800
- Utrošak HJ za 1 kg prirasta – 5,6-5,9
- Randman toplih polovica (%) – 59-61
- Udio mišića u trupu (%) – 59-62

Izvor: Program gojidbenog stvaranja goveda u Hrvatskoj, 1991.



# PASMINE GOVEDA



## POŽELJNE OSOBINE SMEĐE PASMINE GOVEDA

- Laktacijska proizvodnja (305 dana) uzrasla krava
  - Mlijeko (kg) - 5500
  - Mast (%) - 4,0
  - Bjelančevine (%) - 3,6
- Proizvodnja 100 dana laktacije – mlijeko (kg) - 2400
- Indeks vimena odrasle krave – 45-47
- Istjek mlijeka (kg/min.) – 1,8-2,0
- Kapacitet uzimanja suhe tvari (kg/100 kg žive težine) (%) – 3,6
- Broj teljenja (laktacija u životu) – 7
- Interval između teljenja (dana) - 370

Izvor: Program gojidbenog stvaranja goveda u Hrvatskoj, 1991.



# PASMINE GOVEDA



## OBITELJSKA GOSPODARSTVA / FAMILY FARMS

### PRIKAZ PO PASMINAMA I REDNOM BROJU LAKTACIJE REVIEW BY BREED AND ORDINAL NUMBERS OF LACTATION

Izvešće HSC, 2005.

Pasmina / Laktacija	Ukupno zaključene laktacije	Standardna laktacija – 305 dana					
		Broj laktacija	Mlijeko kg	Mast kg	Mast %	Protein kg	Protein %
Breed / Lactation	Total recorded lactations	Production in 305 – day lactation					
		No. calc. lactation	Milk, kg	Fat, kg	Fat, %	Protein, kg	Protein, %
I.	66	65	4958	202	4,08	170	3,42
II.	28	27	5728	231	4,04	198	3,46
III.	28	28	6074	247	4,06	209	3,45
IV. i više	73	71	6179	240	3,88	206	3,33
<b>Uk.–Pros. / Tot.–Aver.</b>	<b>195</b>	<b>191</b>	<b>5684</b>	<b>227</b>	<b>3,99</b>	<b>193</b>	<b>3,40</b>

Smeđa / Brown





# *PASMINE GOVEDA*



Sivo tirolsko govedo





# *PASMINE GOVEDA*



## Pincgavsko govedo





# *PASMINJE GOVEDA*



## Holstein-frizijsko govedo



provided by Hoard's Dairyman



*PASMINJE GOVEDA*



Izgled mliječne žlijezde  
holstein krave



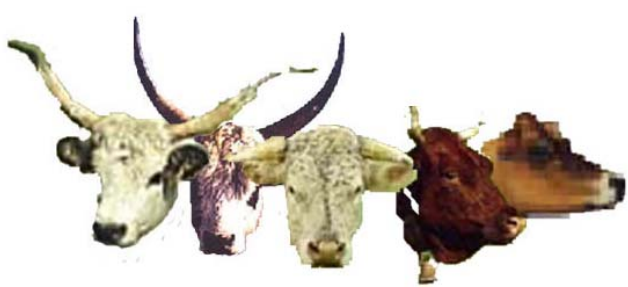


# *PASMINE GOVEDA*



Krave H.-F. pasmine na jednoj izložbi u Velikoj Britaniji

Izvor: Dairy & Beef, 2004.



# PASMINE GOVEDA



## POŽELJNE OSOBINE HOLSTEIN PASMINE GOVEDA

- Tip goveda – MLIJEČNI
- Zrelost pasmine – srednje zrela
- Težina uzrasle krave (kg) – 650-700
- Visina grebena krave (cm) – 138-142
- Dob kod oplodnje (mj.) – 14-15
- Dob kod prvog teljenja (mj.) – 23-24
- Trajanje proizvodnog vijeka krave (god) – 5-6
- Težina uzraslog bika (kg) – 1100-1250
- Visina grebena bika (cm) – 160-170



# PASMINE GOVEDA



## POŽELJNE OSOBINE HOLSTEIN

### PASMINE GOVEDA

- Laktacijska proizvodnja (305 dana) uzrasla krava
  - Mlijeko (kg) - 8000
  - Mast (%) - 3,7
  - Bjelančevine (%) - 3,3
- Proizvodnja 100 dana laktacije – mlijeko (kg) - 3300
- Indeks vimena odrasle krave – 49
- Istjek mlijeka (kg/min.) – 2,2-2,4
- Kapacitet uzimanja suhe tvari (kg/100 kg žive težine) (%) – 3,8
- Broj teljenja (laktacija u životu) – 5-6
- Interval između teljenja (dana) - 390

Izvor: Program gojidbenog stvaranja goveda u Hrvatskoj, 1991.



# *PASMINJE GOVEDA*



## Crveno Holstein-frizijsko govedo







# PASMINE GOVEDA



## OBITELJSKA GOSPODARSTVA / FAMILY FARMS

### PRIKAZ PO PASMINAMA I REDNOM BROJU LAKTACIJE REVIEW BY BREED AND ORDINAL NUMBERS OF LACTATION

Izvešće HSC, 2005.

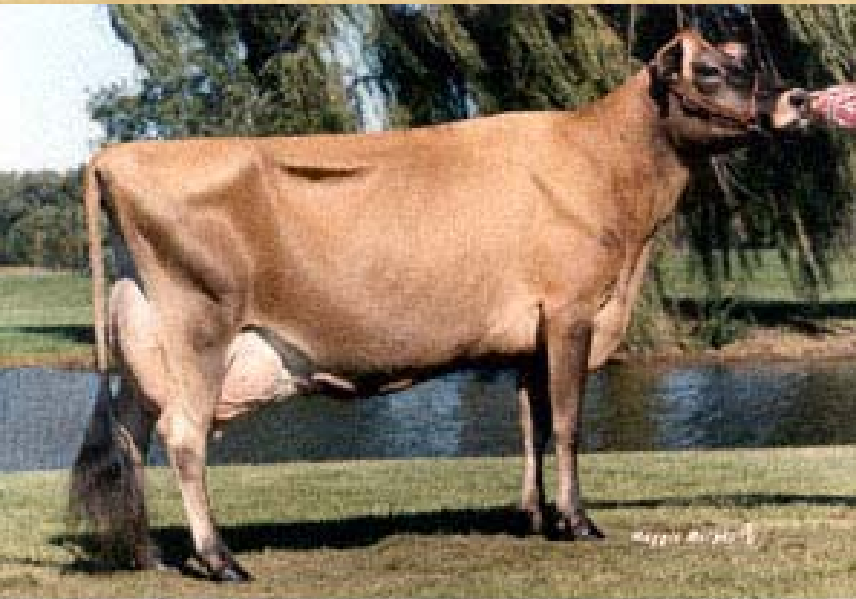
Pasmina / Laktacija	Ukupno zaključene laktacije	Standardna laktacija – 305 dana					
		Broj laktacija	Mlijeko kg	Mast kg	Mast %	Protein kg	Protein %
Breed / Lactation	Total recorded lactations	Production in 305 – day lactation					
		No. calc. lactation	Milk, kg	Fat, kg	Fat, %	Protein, kg	Protein, %
<b>Holstein</b>							
I.	2167	2077	5443	216	3,98	175	3,22
II.	1264	1196	5939	241	4,06	193	3,26
III.	874	839	6080	248	4,08	199	3,26
IV. i više	1628	1534	5985	240	4,01	195	3,25
<b>Uk.–Pros. / Tot.–Aver.</b>	<b>5933</b>	<b>5646</b>	<b>5790</b>	<b>233</b>	<b>4,02</b>	<b>188</b>	<b>3,25</b>



# *PASMINE GOVEDA*



## Jersey govedo

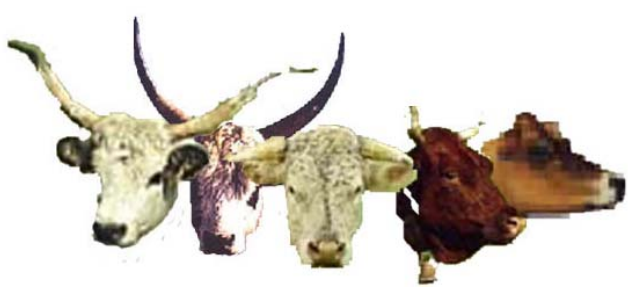


provided by Hoard's Dairyman

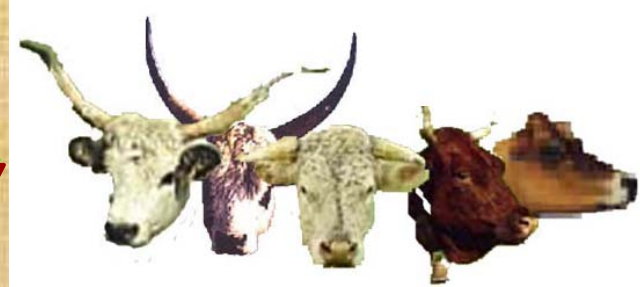


© 1987 The American Jersey Cattle Association

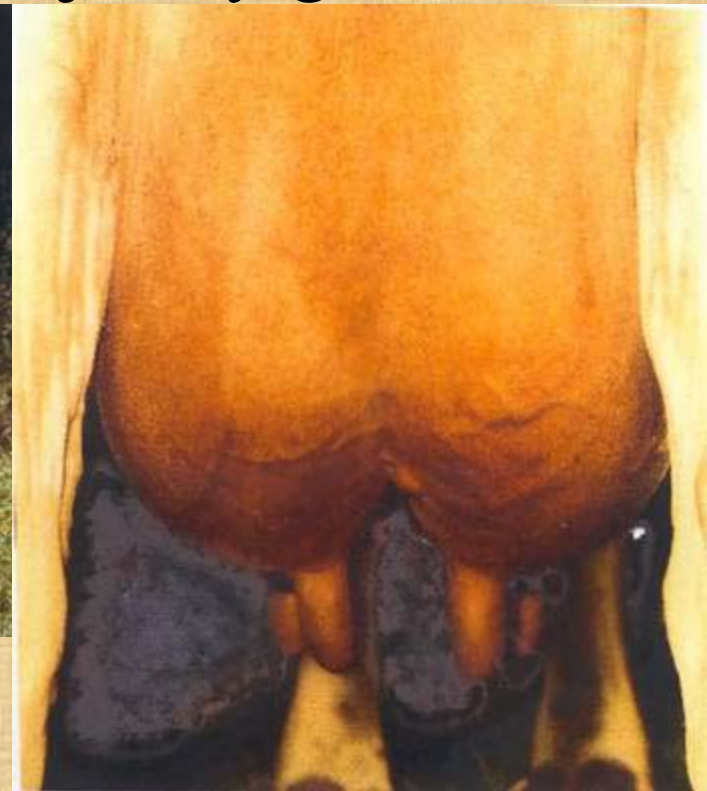
Provided by The American Jersey Cattle Association



# *PASMINE GOVEDA*



- Jersey goveda na paši i vime jersey goveda





# *PASMINJE GOVEDA*



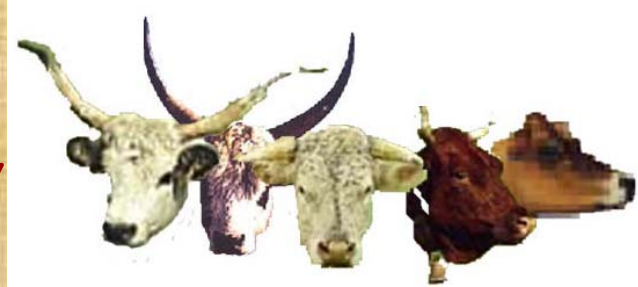
Crveno dansko govedo



Provided by Rød Dansk Majkerace



***PASMINE GOVEDA***



## Crni Angus



© 1997 Oklahoma State University



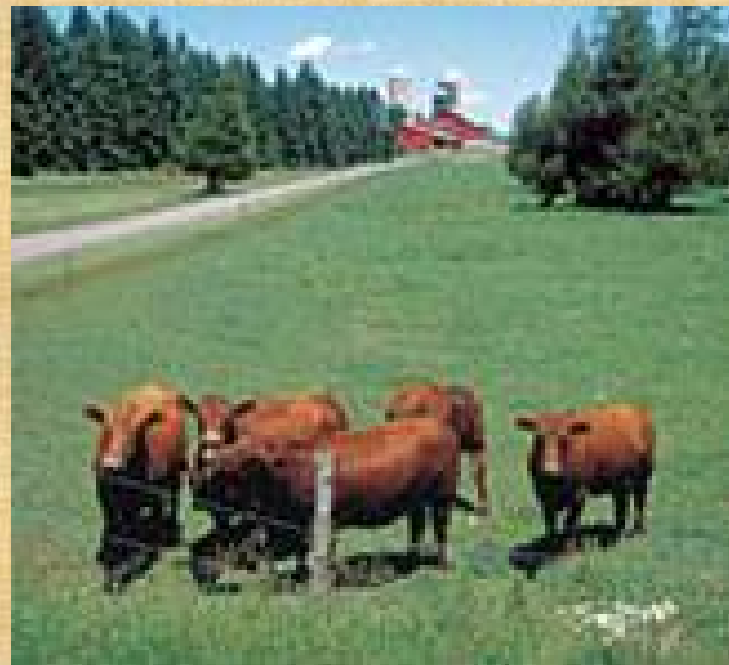
© 1997 Oklahoma State University



***PASMINE GOVEDA***



## Crveni Angus





*PASMINE GOVEDA*

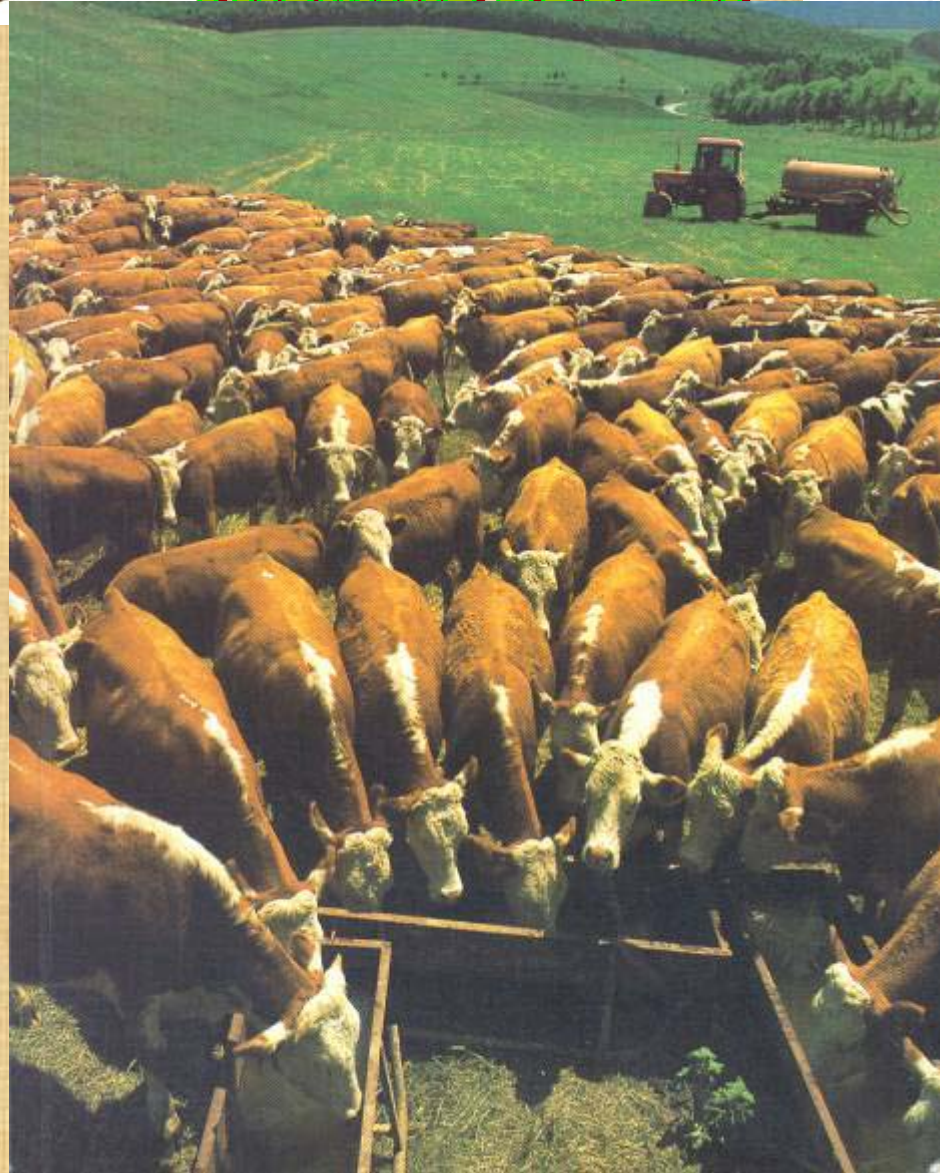


## Rogati Hereford





# PASWINE GOVEDA







# *PASMINJE GOVEDA*

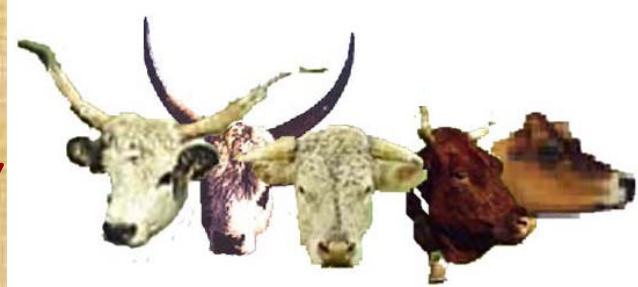


## Bezrožni Hereford



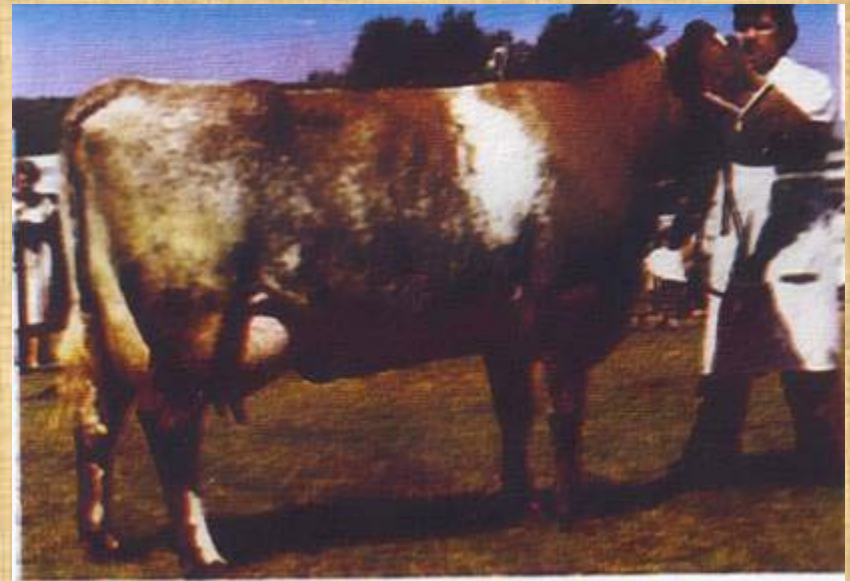


# *PASMINJE GOVEDA*



Shorthorn-meso

Shorthorn-mlijeko





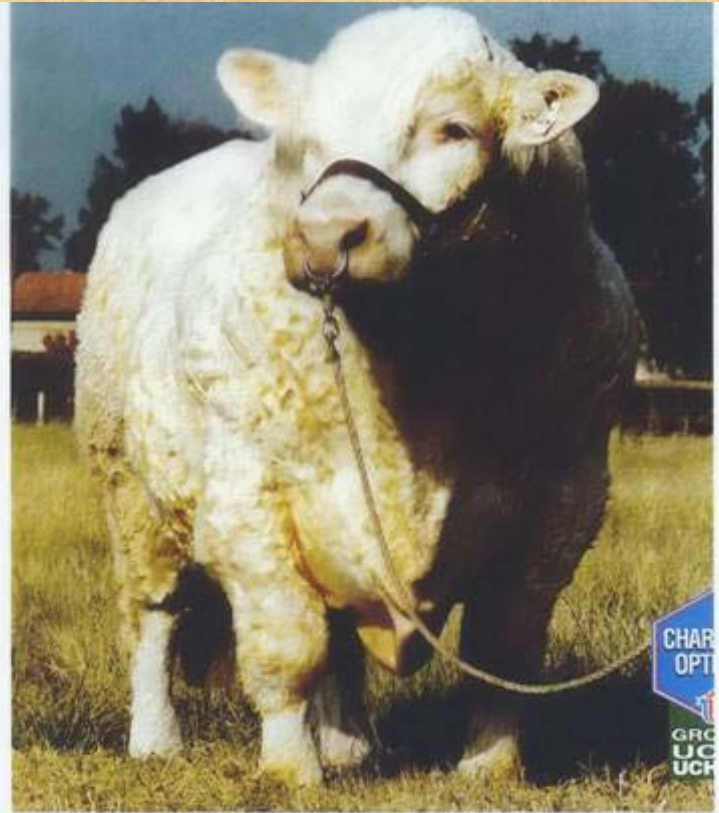
# PASMINE GOVEDA



## Charolais



PERFORMANCES TAUREAU	1 jour/step	120 jours/step	210 jours/step	300 jours/step	POIDS NAISSANCE
BOULI RECORDS	50 kg	248 kg	402 kg	820 kg	1378 kg
	153 cm	226 cm	258 cm	46 cm	♂ 48,2 kg / ♀ 44,6 kg



PERFORMANCES TAUREAU	1 jour/day	120 jours/days	210 jours/days	500 jours/days	POIDS NAISSANCE
BULL'S RECORDS	46 kg	232 kg	417 kg	895 kg	BIRTH WEIGHT
	151 cm	230 cm	265 cm	50 cm	♂ 47,4 kg / ♀ 42,6 kg



*PASMINE GOVEDA*



Charolais - kvaliteta



© 1997 Oklahoma State University



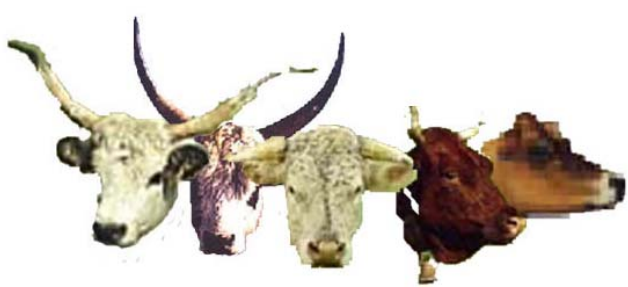


# *PASMINE GOVEDA*



## Limousin

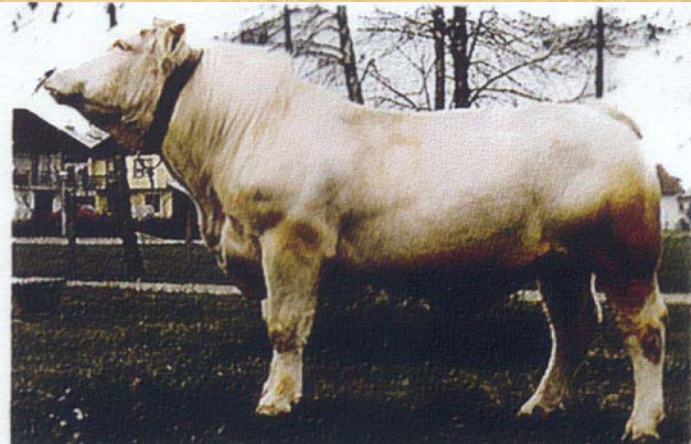
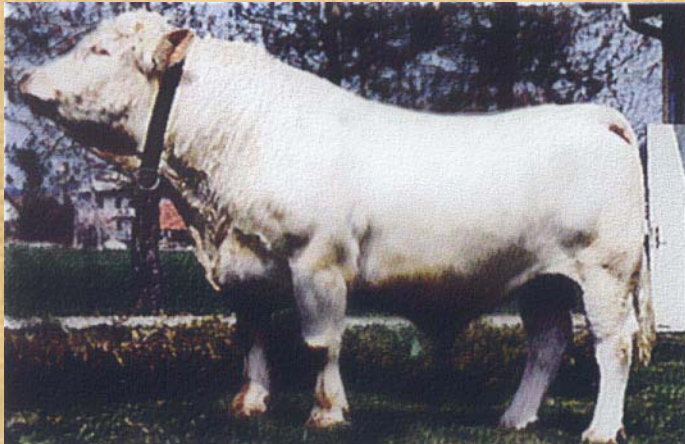




# *PASMINE GOVEDA*



## Slovenski Charolais i Limousin





# *PASMINE GOVEDA*

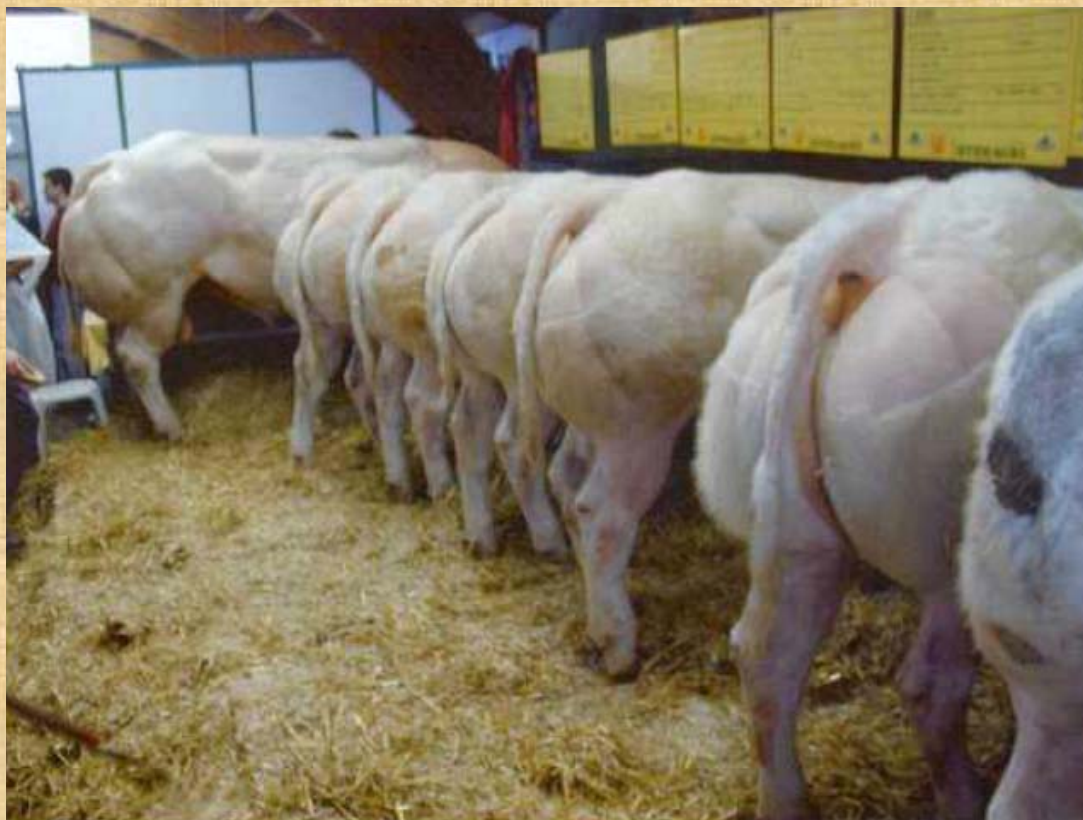


## Belgijsko bijelo-plavo govedo





# PASMINE GOVEDA



Junad pasmine Belgijsko bijelo-plavo na jednoj izložbi (jedan bik je s 13 mj. bio težak 642 kg, s prosječnim dnevnim prirastom od 2.007 g)

Izvor: PROANIWAL ASBL





# PASMINE GOVEDA



Kvaliteta mesa junadi Belgijske bijelo-plave pasmine

Izvor: PROANIWAL ASBL



animal)



# *PASMINE GOVEDA*



Buša u Makedoniji

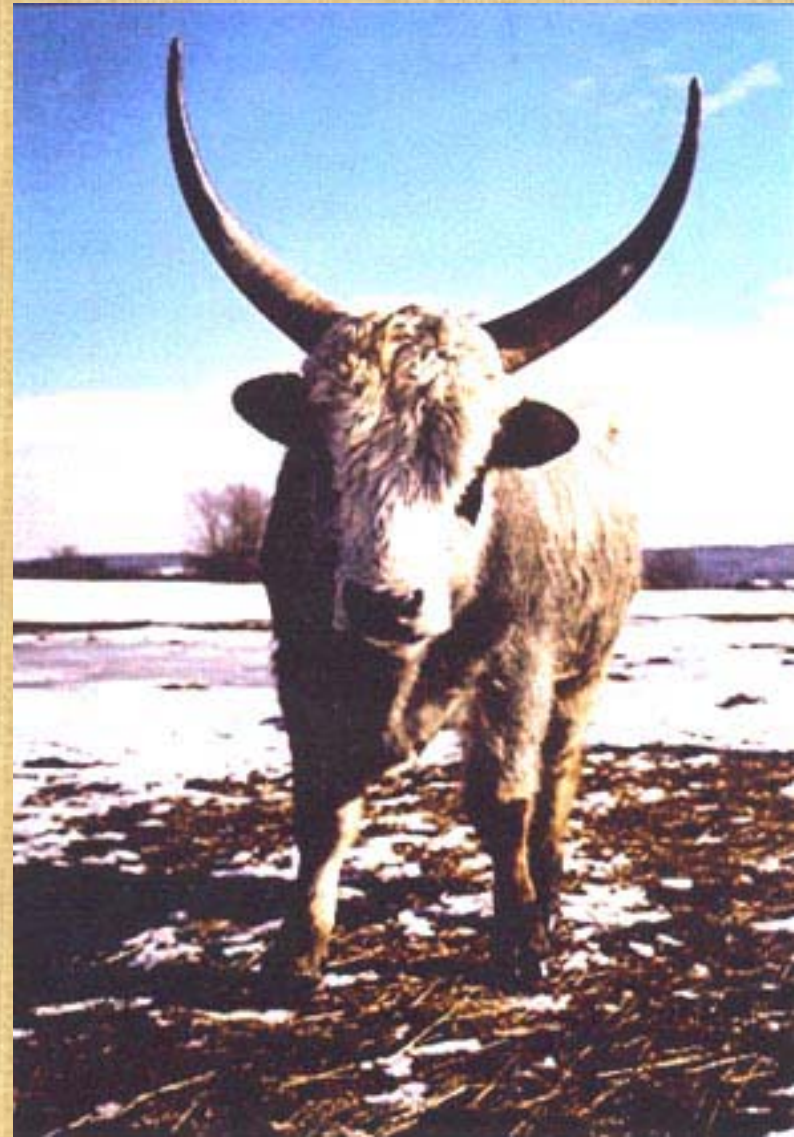
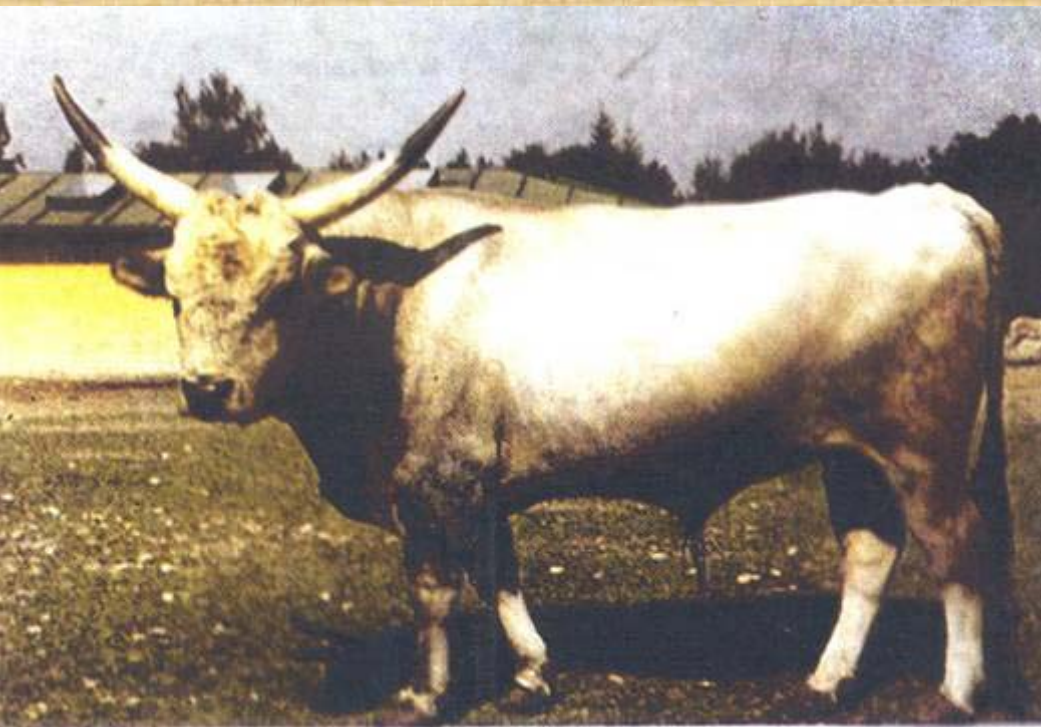




# *PASVINE GOVEDA*



Slavonski podolac

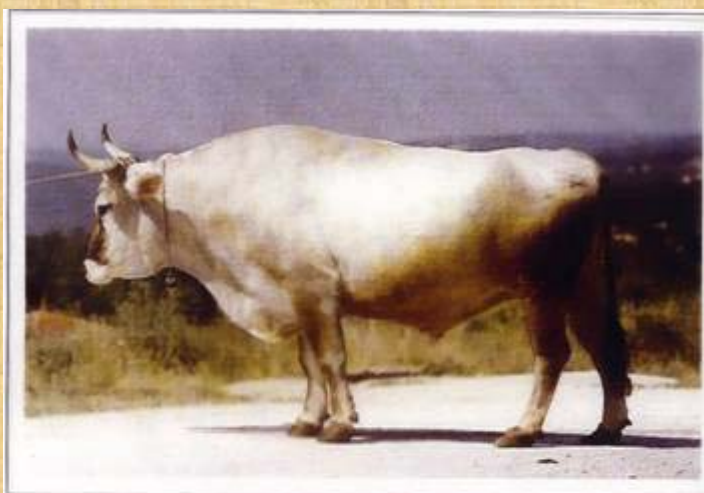




# PASMINE GOVEDA



Istarsko  
govedo  
(Istarski  
podolac)



Vlasnik: Martin Vitasović

BAKIN

(9 godina)



Vlasnik: Aldo i Marino Štitančić

FURMINA

(95000097)



Vlasnik: Vergilio Breščić

BAKIN

(9.5 godina)



Vlasnik: Jaga Perša

GALJARDA

(95000113)