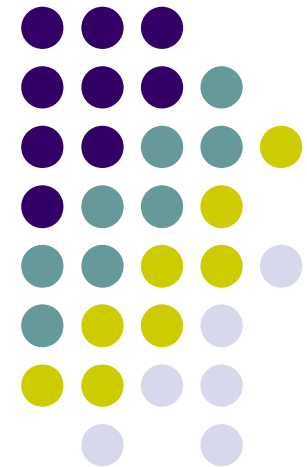


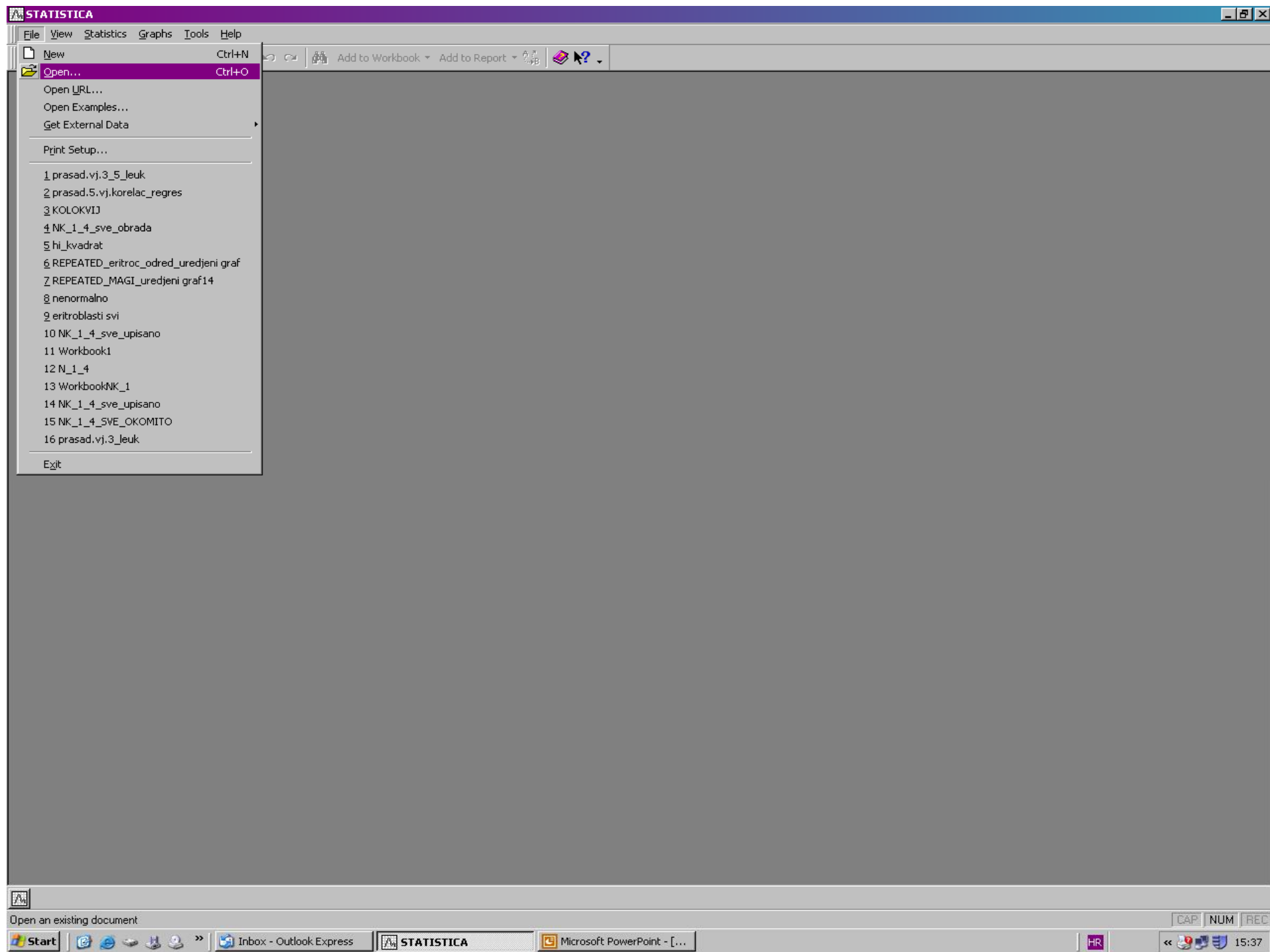
Osnove statistike

7. vježbe





- Pronalaženje podataka
- Korelacija
- Regresijska analiza



STATISTICA - prasad.vj.3_5_leuk

File Edit View Insert Format Statistics Graphs Tools Data Window Help

Add to Workbook Add to Report

Arial 10 **B** *I* U

 Vars Cases

Data: prasad.vj.3_5_leuk (5v by 90c)

	1	2	3	4	5															
	kod	porod.tež(g)	tež.21d	leukoc.(10 ⁹ /l)	ALT															
1	M	800	4200	7,3	70															
2	M	970	5010	12,7	30															
3	M	825	2560	7,8	60															
4	M	985	6500	7,1	40															
5	M	990	6200	11,4	74															
6	M	825	4800	6,2	58															
7	M	995	5000	8,6	39															
8	M	860	5200	4,1	45															
9	M	705	3930	7,8	60															
10	M	805	6000	7,6	41															
11	M	965	5600	9,6	46															
12	M	820	3900	9,2	48															
13	M	960	2690	19,3	38															
14	M	780	3950	20,8	52															
15	M	857	2110	11,8	67															
16	M	798	4800	10,2	50															
17	M	806	4420	7,8	57															
18	M	930	4560	11,9	52															
19	M	906	4740	16,8	51															
20	M	750	4960	31,9	44															
21	M	770	4880	11,5	38															
22	M	840	4320	31,3	61															
23	M	808	3200	11,1	57															
24	M	801	3870	12,1	61															
25	M	925	4100	6,1	44															
26	M	835	4000	15,1	41															
27	M	750	1700	8,9	66															
28	M	825	5400	7,8	39															
29	M	822	3500	11,1	51															

Ready C76.V4 12,7 Set: ON Weight: OFF CAP NUM REC

Start Inbox - Outlook Express STATISTICA - prasad... Microsoft PowerPoint - [...] HR 15:38

STATISTICA - [Data: prasad.vj.3_5_leuk (5v by 90c)]

File Edit View Insert Format Statistics Graphs Tools Data Window Help

Resume... Ctrl+R Add to Report

ByGroup Analysis

Arial 10

Basic Statistics/Tables

- Multiple Regression
- ANOVA
- Nonparametrics
- Distribution Fitting
- Advanced Linear/Nonlinear Models
- Multivariate Exploratory Techniques
- Industrial Statistics & Six Sigma
- Power Analysis
- Neural Networks
- Data-Mining
- QC Data Mining & Root Cause Analysis
- Text & Document Mining, Web Crawling
- Statistics of Block Data
- STATISTICA Visual Basic
- Probability Calculator

	1	2				
	kod	porod.te				
1	M					70
2	M					30
3	M					60
4	M					40
5	M					74
6	M					58
7	M					39
8	M					45
9	M					60
10	M					41
11	M					46
12	M					48
13	M					38
14	M					52
15	M					67
16	M					50
17	M					57
18	M	930	4560	11,9		52
19	M	906	4740	16,8		51
20	M	750	4960	31,9		44
21	M	770	4880	11,5		38
22	M	840	4320	31,3		61
23	M	808	3200	11,1		57
24	M	801	3870	12,1		61
25	M	925	4100	6,1		44
26	M	835	4000	15,1		41
27	M	750	1700	8,9		66
28	M	825	5400	7,8		39
29	M	822	3500	11,1		51
30	M	970	4600	10,2		34
31	S	1225	5900	12,2		40
32	S	1250	5100	7,1		43
33	S	1670	8600	15		51
34	S	1810	7400	32,8		41
35	S	1500	6800	11,9		39
36	S	1645	7030	9,6		40
37	S	1565	7700	6,2		39
38	S	1845	5950	7,2		37
39	S	1375	5000	10,9		54
40	S	1555	6450	5,8		46
41	S	1610	6500	8,2		46
42	S	1325	7100	27,6		41
43	S	1560	6800	8,2		66
44	S	1650	6840	9,7		35
45	S	1655	6060	12,1		30
46	S	1635	5780	13,2		34

Starts up Basic Statistics/Tables

C2,V2 970 Set: ON Weight: OFF CAP NUM REC

Start InBox - Outlook Express STATISTICA - [Data: ... Microsoft PowerPoint - [...]

HR 15:39

STATISTICA - [Data: prasad.vj.3_5_leuk (5v by 90c)]

File Edit View Insert Format Statistics Graphs Tools Data Window Help

Arial 10 B I U

	1	2	3	4	5
	kod	porod.tež(g)	tež.21d	leukoc.(10 ⁹ /l)	ALT
1	M	800	4200	7,3	70
2	M	970	5010	12,7	30
3	M	825	2560	7,8	60
4	M	985	6500	7,1	40
5	M	990	6200	11,4	74
6	M	825	4800	6,2	58
7	M	995	5000	8,6	39
8	M	860	5200	4,1	45
9	M	705	3930	7,8	60
10	M	805	6000	7,6	41
11	M	965	5600	9,6	46
12	M	820	3900	9,2	48
13	M	960	2690	19,3	38
14	M	780	3950	20,8	52
15	M	857	2110	11,8	67
16	M	798	4800	10,2	50
17	M	806	4420	7,8	57
18	M	930	4560	11,9	52
19	M	906	4740	16,8	51
20	M	750	4960	31,9	44
21	M	770	4880	11,5	38
22	M	840	4320	31,3	61
23	M	808	3200	11,1	57
24	M	801	3870	12,1	61
25	M	925	4100	6,1	44
26	M	835	4000	15,1	41
27	M	750	1700	8,9	66
28	M	825	5400	7,8	39
29	M	822	3500	11,1	51
30	M	970	4600	10,2	34
31	S	1225	5900	12,2	40
32	S	1250	5100	7,1	43
33	S	1670	8600	15	51
34	S	1810	7400	32,8	41
35	S	1500	6800	11,9	39
36	S	1645	7030	9,6	40
37	S	1565	7700	6,2	39
38	S	1845	5950	7,2	37
39	S	1375	5000	10,9	54
40	S	1555	6450	5,8	46
41	S	1610	6500	8,2	46
42	S	1325	7100	27,6	41
43	S	1560	6800	8,2	66
44	S	1650	6840	9,7	35
45	S	1655	6060	12,1	30
46	S	1635	5780	13,2	34

Basic Statistics and Tables: prasad.vj.3_5_leuk

Quick

- Descriptive statistics
- Correlation matrices
- t-test, independent, by groups
- t-test, independent, by variables
- t-test, dependent samples
- t-test, single sample
- Breakdown & one-way ANOVA
- Breakdown; non-factorial tables
- Frequency tables
- Tables and banners
- Multiple response tables
- Difference tests: t, %, means
- Probability calculator

OK Cancel Options Open Data

Ready C2,V2 970 Set: ON Weight: OFF CAP NUM REC

Start Inbox - Outlook Express STATISTICA - [Data: ... Microsoft PowerPoint - [...]

STATISTICA - [Data: prasad.vj.3_5_leuk (5v by 90c)]

File Edit View Insert Format Statistics Graphs Tools Data Window Help

Arial 10 B I U

	1	2	3	4	5
	kod	porod.tež(g)	tež.21d	leukoc.(10 ⁹ /l)	ALT
1	M	800	4200	7,3	70
2	M	970	5010	12,7	30
3	M	825	2560	7,8	60
4	M	985	6500	7,1	40
5	M	990	6200	11,4	74
6	M	825	4800	6,2	58
7	M	995	5000	8,6	39
8	M	860	5200	4,1	45
9	M	705	3930	7,8	60
10	M	805	6000	7,6	41
11	M	965	5600	9,6	
12	M	820	3900	9,2	
13	M	960	2690	19,3	
14	M	780	3950	20,8	
15	M	857	2110	11,8	
16	M	798	4800	10,2	
17	M	806	4420	7,8	
18	M	930	4560	11,9	
19	M	906	4740	16,8	
20	M	750	4960	31,9	
21	M	770	4880	11,5	
22	M	840	4320	31,3	
23	M	808	3200	11,1	
24	M	801	3870	12,1	
25	M	925	4100	6,1	
26	M	835	4000	15,1	
27	M	750	1700	8,9	
28	M	825	5400	7,8	
29	M	822	3500	11,1	
30	M	970	4600	10,2	
31	S	1225	5900	12,2	
32	S	1250	5100	7,1	43
33	S	1670	8600	15	51
34	S	1810	7400	32,8	41
35	S	1500	6800	11,9	39
36	S	1645	7030	9,6	40
37	S	1565	7700	6,2	39
38	S	1845	5950	7,2	37
39	S	1375	5000	10,9	54
40	S	1555	6450	5,8	46
41	S	1610	6500	8,2	46
42	S	1325	7100	27,6	41
43	S	1560	6800	8,2	66
44	S	1650	6840	9,7	35
45	S	1655	6060	12,1	30
46	S	1635	5780	13,2	34

Product-Moment and Partial Correlations: prasad.vj.3_5_leuk

One variable list Two lists (rect. matrix) Summary

First list: none Second list: none

Quick Advanced/plot Options

Summary: Correlation matrix

Scatterplot matrix for selected variables

SELECT CASES \$ 10 W

Weighted moments

DF = W1 N-1

MD deletion Casewise Pairwise

Product-Moment and ...

For Help, press F1

C2,V2 970 Set: ON Weight: OFF CAP NUM REC

Start Inbox - Outlook Express STATISTICA - [Data: ... Microsoft PowerPoint - [...]

HR 15:40

STATISTICA - [Data: prasad.vj.3_5_leuk (5v by 90c)]

File Edit View Insert Format Statistics Graphs Tools Data Window Help

Arial 10 B I U

	1	2	3	4	5
	kod	porod.tež(g)	tež.21d	leukoc.(10 ⁹ /l)	ALT
1	M	800	4200	7,3	70
2	M	970	5010	12,7	30
3	M	825	2560	7,8	60
4	M	985	6500	7,1	40
5	M	990	6200	11,4	74
6	M	825	4800	6,2	58
7	M	995	5000	8,6	39
8	M	860	5200	4,1	45
9	M	705	3930	7,8	60
10	M	805	6000	7,6	41
11	M	965	5600	9,6	
12	M	820	3900	9,2	
13	M	960	2690	19,3	
14	M	780	3950	20,8	
15	M	857	2110	11,8	
16	M	798	4800	10,2	
17	M	806	4420	7,8	
18	M	930	4560	11,9	
19	M	906	4740	16,8	
20	M	750	4960	31,9	
21	M	770	4880	11,5	
22	M	840	4320	31,3	
23	M	808	3200	11,1	
24	M	801	3870	12,1	
25	M	925	4100	6,1	
26	M	835	4000	15,1	
27	M	750	1700	8,9	
28	M	825	5400	7,8	
29	M	822	3500	11,1	
30	M	970	4600	10,2	
31	S	1225	5900	12,2	
32	S	1250	5100	7,1	
33	S	1670	8600	15	51
34	S	1810	7400	32,8	41
35	S	1500	6800	11,9	39
36	S	1645	7030	9,6	40
37	S	1565	7700	6,2	39
38	S	1845	5950	7,2	37
39	S	1375	5000	10,9	54
40	S	1555	6450	5,8	46
41	S	1610	6500	8,2	46
42	S	1325	7100	27,6	41
43	S	1560	6800	8,2	66
44	S	1650	6840	9,7	35
45	S	1655	6060	12,1	30
46	S	1635	5780	13,2	34

Product-Moment and Partial Correlations: prasad.vj.3

One variable list Two lists (rect. matrix) Summary

Select one or two variable lists

1-kod
2-porod.tež(g)
3-tež.21d
4-leukoc.(109/l)
5-ALT

1-kod
2-porod.tež(g)
3-tež.21d
4-leukoc.(109/l)
5-ALT

OK Cancel

Select All Spread Zoom Select All Spread Zoom

First variable list: 2 Second variable list (optional): 3-5

Show appropriate variables only

Product-Moment and ...

For Help, press F1

C2,V2 970 Set: ON Weight: OFF CAP NUM REC

Start Inbox - Outlook Express STATISTICA - [Data: ... Microsoft PowerPoint - [...]

HR 15:40

STATISTICA - [Workbook2* - Correlations (prasad.vj.3_5_leuk)]

File Edit View Insert Format Statistics Graphs Tools Data Workbook Window Help

Arial 10 B I U

Workbook2*

- Basic Statistics/Tables (prasad.vj.3_5_leuk)
- Correlations dialog
- Correlations (prasad.vj.3_5_leuk)

Correlations (prasad.vj.3_5_leuk)
Marked correlations are significant at $p < ,05000$
N=90 (Casewise deletion of missing data)

Variable	tež.21d	leukoc.(10 ⁹ /l)	ALT
porod.tež(g)	0,84	0,00	-0,44

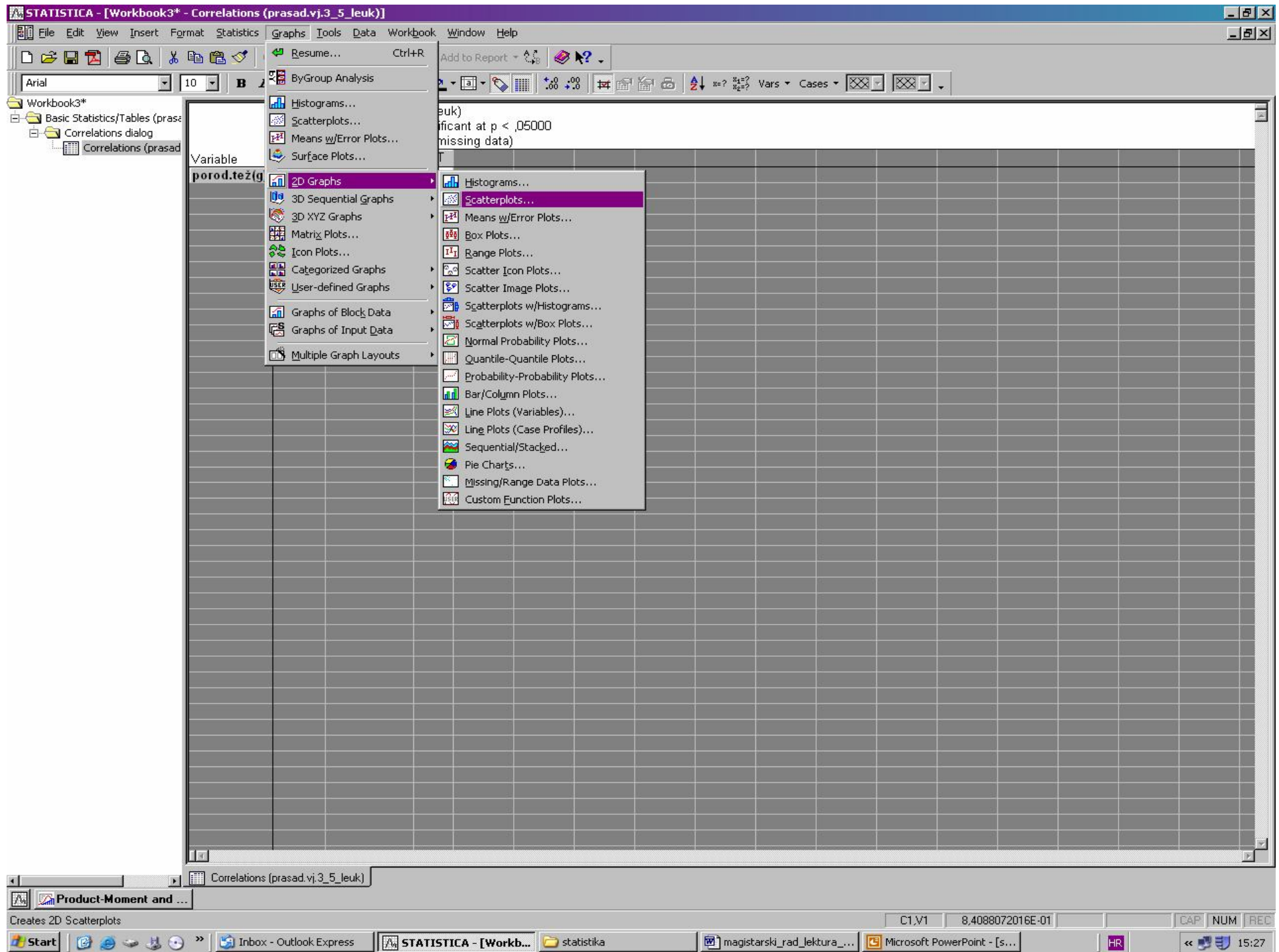
Correlations (prasad.vj.3_5_leuk)

Product-Moment and ...

For Help, press F1

C1.V1 8,4088072016E-01 CAP NUM REC

Start | Inbox - Outlook Express | STATISTICA - [Workb... | Microsoft PowerPoint - [... | HR | 15:41



STATISTICA - [Data: prasad.vj.3_5_leuk (5v by 90c)]

File Edit View Insert Format Statistics Graphs Tools Data Window Help

Arial 10 B I U

	1	2	3	4	5
	kod	porod.tež(g)	tež.21d	leukoc.(10 ⁹ /l)	ALT
1	M	800	4200	7,3	70
2	M	970	5010	12,7	30
3	M	825	2560	7,8	60
4	M	985	6500	7,1	40
5	M	990	6200	11,4	74
6	M	825	4800	6,2	58
7	M	995	5000	8,6	39
8	M	860	5200		
9	M	705	3930		
10	M	805	6000		
11	M	965	5600		
12	M	820	3900		
13	M	960	2690	1	
14	M	780	3950	2	
15	M	857	2110	1	
16	M	798	4800	1	
17	M	806	4420		
18	M	930	4560	1	
19	M	906	4740	1	
20	M	750	4960	3	
21	M	770	4880	1	
22	M	840	4320	3	
23	M	808	3200	1	
24	M	801	3870	1	
25	M	925	4100		
26	M	835	4000	1	
27	M	750	1700		
28	M	825	5400		
29	M	822	3500	1	
30	M	970	4600	1	
31	S	1225	5900	1	
32	S	1250	5100		
33	S	1670	8600		
34	S	1810	7400	3	
35	S	1500	6800	1	
36	S	1645	7030	5,6	40
37	S	1565	7700	6,2	39
38	S	1845	5950	7,2	37
39	S	1375	5000	10,9	54
40	S	1555	6450	5,8	46
41	S	1610	6500	8,2	46
42	S	1325	7100	27,6	41
43	S	1560	6800	8,2	66
44	S	1650	6840	9,7	35
45	S	1655	6060	12,1	30
46	S	1635	5780	13,2	34

2D Scatterplots

Quick Advanced Appearance Categorized Options 1 Options 2

Variables:

X: none
Y: none

Graph type:
 Regular
 Multiple

Regression bands:
 Off level:
 Confidence .95
 Prediction

Fit type:
 Linear

SELECT CASES Options Updating Auto OK Cancel

Product-Moment and Parti... 2D Scatterplots

Ready C76.V4 12,7 Set:OFF Weight:OFF CAP NUM REC

Start Inbox - Outlook Express STATISTICA - [Data: ...] statistika magistarski_rad_lektura... Microsoft PowerPoint - [s...]

15:28

STATISTICA - [Data: prasad.vj.3_5_leuk (5v by 90c)]

File Edit View Insert Format Statistics Graphs Tools Data Window Help

Arial 10 B I U

	1	2	3	4	5
	kod	porod.tež(g)	tež.21d	leukoc.(10 ⁹ /l)	ALT
1	M	800	4200	7,3	70
2	M	970	5010	12,7	30
3	M	825	2560	7,8	60
4	M	985	6500	7,1	40
5	M	990	6200	11,4	74
6	M	825	4800	6,2	58
7	M	995	5000	8,6	39
8	M	860	5200		
9	M	705	3930		
10	M	805	6000		
11	M	965	5600		
12	M	820	3900		
13	M	960	2690	1	
14	M	780	3950	2	
15	M	857	2110	1	
16	M	798	4800	1	
17	M	806	4420		
18	M	930	4560	1	
19	M	906	4740	1	
20	M	750	4960	3	
21	M	770	4880	1	
22	M	840	4320	3	
23	M	808	3200	1	
24	M	801	3870	1	
25	M	925	4100		
26	M	835	4000	1	
27	M	750	1700		
28	M	825	5400		
29	M	822	3500	1	
30	M	970	4600	1	
31	S	1225	5900	1	
32	S	1250	5100		
33	S	1670	8600		
34	S	1810	7400	3	
35	S	1500	6800	1	
36	S	1645	7030	5,6	40
37	S	1565	7700	6,2	39
38	S	1845	5950	7,2	37
39	S	1375	5000	10,9	54
40	S	1555	6450	5,8	46
41	S	1610	6500	8,2	46
42	S	1325	7100	27,6	41
43	S	1560	6800	8,2	66
44	S	1650	6840	9,7	35
45	S	1655	6060	12,1	30
46	S	1635	5780	13,2	34

2D Scatterplots

Quick Advanced Appearance Categorized Options 1 Options 2

Variables:

X: none

Select Variables for Scatterplot

1-kod
2-porod.tež(g)
3-tež.21d
4-leukoc.(109/l)
5-ALT

1-kod
2-porod.tež(g)
3-tež.21d
4-leukoc.(109/l)
5-ALT

OK Cancel

Select All Spread Zoom Select All Spread Zoom

X: Y:

2 3

Show appropriate variables only

SELECT CASES Options Updating Auto OK Cancel

Product-Moment and Parti... 2D Scatterplots

Ready C76.V4 12,7 Set:OFF Weight:OFF CAP NUM RED

Start Inbox - Outlook Express STATISTICA - [Data: ...] statistika magistarski_rad_lektura_... Microsoft PowerPoint - [s...]

15:28

STATISTICA - [Data: prasad.vj.3_5_leuk (5v by 90c)]

File Edit View Insert Format Statistics Graphs Tools Data Window Help

Arial 10 B I U

	1	2	3	4	5
	kod	porod.tež(g)	tež.21d	leukoc.(10 ⁹ /l)	ALT
1	M	800	4200	7,3	70
2	M	970	5010	12,7	30
3	M	825	2560	7,8	60
4	M	985	6500	7,1	40
5	M	990	6200	11,4	74
6	M	825	4800	6,2	58
7	M	995	5000	8,6	39
8	M	860	5200		
9	M	705	3930		
10	M	805	6000		
11	M	965	5600		
12	M	820	3900		
13	M	960	2690	1	
14	M	780	3950	2	
15	M	857	2110	1	
16	M	798	4800	1	
17	M	806	4420		
18	M	930	4560	1	
19	M	906	4740	1	
20	M	750	4960	3	
21	M	770	4880	1	
22	M	840	4320	3	
23	M	808	3200	1	
24	M	801	3870	1	
25	M	925	4100		
26	M	835	4000	1	
27	M	750	1700		
28	M	825	5400		
29	M	822	3500	1	
30	M	970	4600	1	
31	S	1225	5900	1	
32	S	1250	5100		
33	S	1670	8600		
34	S	1810	7400	3	
35	S	1500	6800	1	
36	S	1645	7030	5,6	40
37	S	1565	7700	6,2	39
38	S	1845	5950	7,2	37
39	S	1375	5000	10,9	54
40	S	1555	6450	5,8	46
41	S	1610	6500	8,2	46
42	S	1325	7100	27,6	41
43	S	1560	6800	8,2	66
44	S	1650	6840	9,7	35
45	S	1655	6060	12,1	30
46	S	1635	5780	13,2	34

2D Scatterplots

Quick | Advanced | Appearance | Categorized | Options 1 | Options 2

Variables:

X: porod.tež(g)

Y: tež.21d

Graph type:

Regular

Multiple

Regression bands:

Off

Confidence level: .95

Prediction

Fit type:

Linear

SELECT CASES Options Updating Auto OK Cancel

Product-Moment and Parti... 2D Scatterplots

Ready C76.V4 12,7 Set:OFF Weight:OFF CAP NUM REC

Start Inbox - Outlook Express STATISTICA - [Data: ... statistika magistarski_rad_lektura_... Microsoft PowerPoint - [s... HR 15:28

