

Statistika

2. vježbe

Statistica

- ◆ računalni program
- ◆ pronalaženje unesenih podataka i njihova obrada

Primjer 1

- ◆ pratili smo proizvodnost 30 nesilica Leghorn pasmine na farmi XY promatrajući broj snesenih jaja u razdoblju od 1.1.2004. do 1.12.2004.
- ◆ pronalaženje podataka i analiza



Shortcut (2) to sas.exe

Adobe PhotoDelu...

My Documents

Windows 2000 Professional

Novi Officeov dokument
Otvori Officeov dokument
Windows Update
WinZip
Click Me
Uninstall Click Me

Programs

Documents
Settings
Search
Help
Run...
Log Off akabalin...
Shut Down...

Accessories
Alati Microsoft Officea
BJ Printer
DivX
ImageJ
IncrediMail
Merck Home Edition
Norton Ghost 2001
Picture Package
ScreenSaver.com
Sophos Anti-Virus
Startup
WinZip
Acrobat Reader 5.0
IncrediMail
Internet Explorer
Microsoft Access
Microsoft Excel
Microsoft PowerPoint
Microsoft Word
Outlook Express
Adobe
Windows Media Player
Power Scan
STATISTICA 6

STATISTICA Electronic Manual
STATISTICA

8:49



- Shortcut (2) to sas.exe
- My Computer
- My Network Places
- Recycle Bin
- Internet Explorer
- IncrediMail
- Windows Media Player
- Adobe PhotoDelu...
- mojastrana...
- POSLIJEDIP...
- precaci
- Click Me
- ImageJ
- WinZip
- My Documents
- pilici_dob

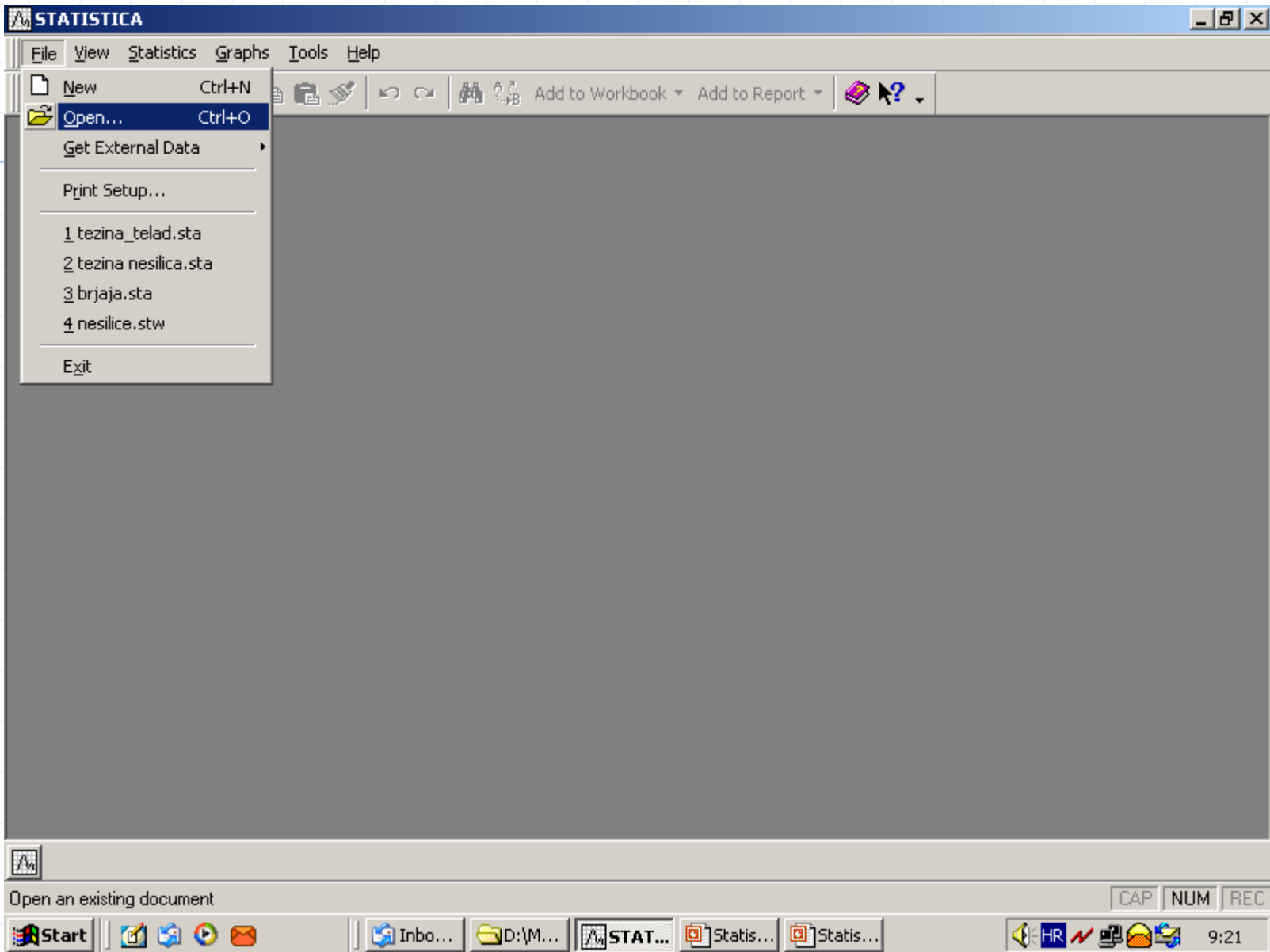
STATISTICA

STATISTICA
Release: 6

This product licensed to:
Stocarstvo-kabalin
Veterinarski fakultet
agr303b080207 ar

Copyright © StatSoft, Inc. 1994-2003.
All rights reserved. This program is
protected by US and international
copyright laws.

 **StatSoft**



Open [?] [X]

Look in: [Back] [Up] [Down] [Grid]

- History
- Desktop
- My Computer
- My Network P...

Statistika
brjaja.sta
tezina nesilica.sta
tezina_telad.sta

File name: [Down] [Open] [Cancel]

Files of type: [Down]



STATISTICA - [Data: Spreadsheet1* (11v by 30c)]

File Edit View Insert Format Statistics Graphs Tools Data Window Help

Resume... Ctrl+R

Arial 10

	1	2	3	9	10	11
	BrJaja	Var1	Var2	Var8	Var9	Var10
13	219					
14	220					
15	220					
16	221					
17	223					
18	223					
19	224					
20	224					
21	224					
22	225					
23	226					
24	228					
25	229					
26	232					
27	234					
28	240					
29	242					
30	256					

- Basic Statistics/Tables
- Multiple Regression
- ANOVA
- Nonparametrics
- Distribution Fitting
- Advanced Linear/Nonlinear Models
- Multivariate Exploratory Techniques
- Industrial Statistics & Six Sigma
- Power Analysis
- Neural Networks
- Data-Mining
- Quality Control, QC Data Mining, and Root Cause Analysis
- Text Mining and Document Retrieval
- Statistics of Block Data
- STATISTICA Visual Basic
- Probability Calculator

C1.V1 164 Set:OFF Weight:OFF CAP NUM REC

	1	2	3	10	11
	BrJaja	Var1	Var2	Var9	Var10
13	219				
14	220				
15	220				
16	221				
17	223				
18	223				
19	224				
20	224				
21	224				
22	225				
23	226				
24	228				
25	229				
26	232				
27	234				
28	240				
29	242				
30	256				

Basic Statistics and Tables: Spreadsheet1

Quick

- Descriptive statistics
- Correlation matrices
- t-test, independent, by groups
- t-test, independent, by variables
- t-test, dependent samples
- t-test, single sample
- Breakdown & one-way ANOVA
- Frequency tables
- Tables and banners
- Multiple response tables
- Difference tests: r, %, means
- Probability calculator

Buttons: OK, Cancel, Options, Open Data, SELECT CASES, W

STATISTICA - [Workbook7* - Descriptive Statistics (brjaja.sta)]

File Edit View Insert Format Statistics Graphs Tools Data Workbook Window Help

Clipboard icons: Add to Workbook, Add to Report

Arial 10 Bold Italic Underline Text alignment icons

Workbook7*
Basic Stat
Descr

Descriptive Statistics (brjaja.sta)

Variable	Mean	Variance	Std.Dev.
Brjaja1		9,0448	16,70463

Valid Print Workbook

Printer: HP LaserJet 4L (Ready)

Print range: All, Pages from: [] to: [], Selection

Copies: Number of copies: 1, Collate:

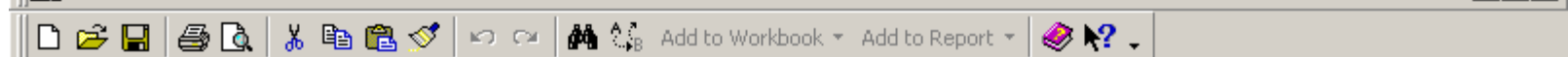
Buttons: OK, Cancel

Descriptive Statistics (brjaja.sta)

Descriptive Statistics:...

For Help, press F1 C1.V1 30 CAP NUM REC

Windows taskbar: Start, Taskbar icons, STATISTICA, Statistika.ppt, 9:27



Workbook7*
Basic Stat
Descr
D

Descriptive Statistics (brjaja.sta)

Variable	Valid	Print	Workbook	riance	Std.Dev.
Brjaja1					16,70463

HP LaserJet 4L Document Properties

Layout Paper/Quality

Orientation
 Portrait
 Landscape

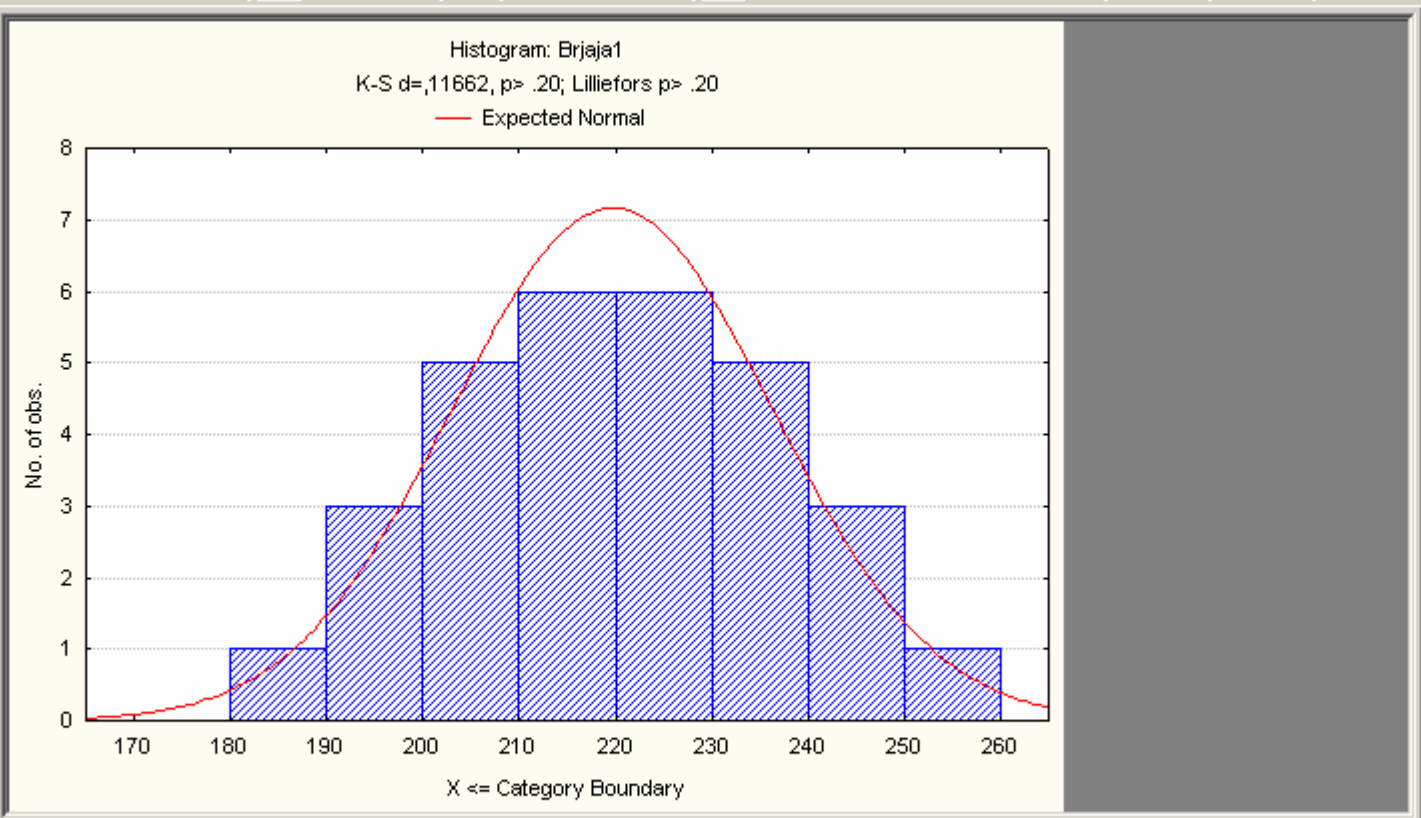
Page Order
 Front to Back
 Back to Front

Pages Per Sheet: 1

Advanced...

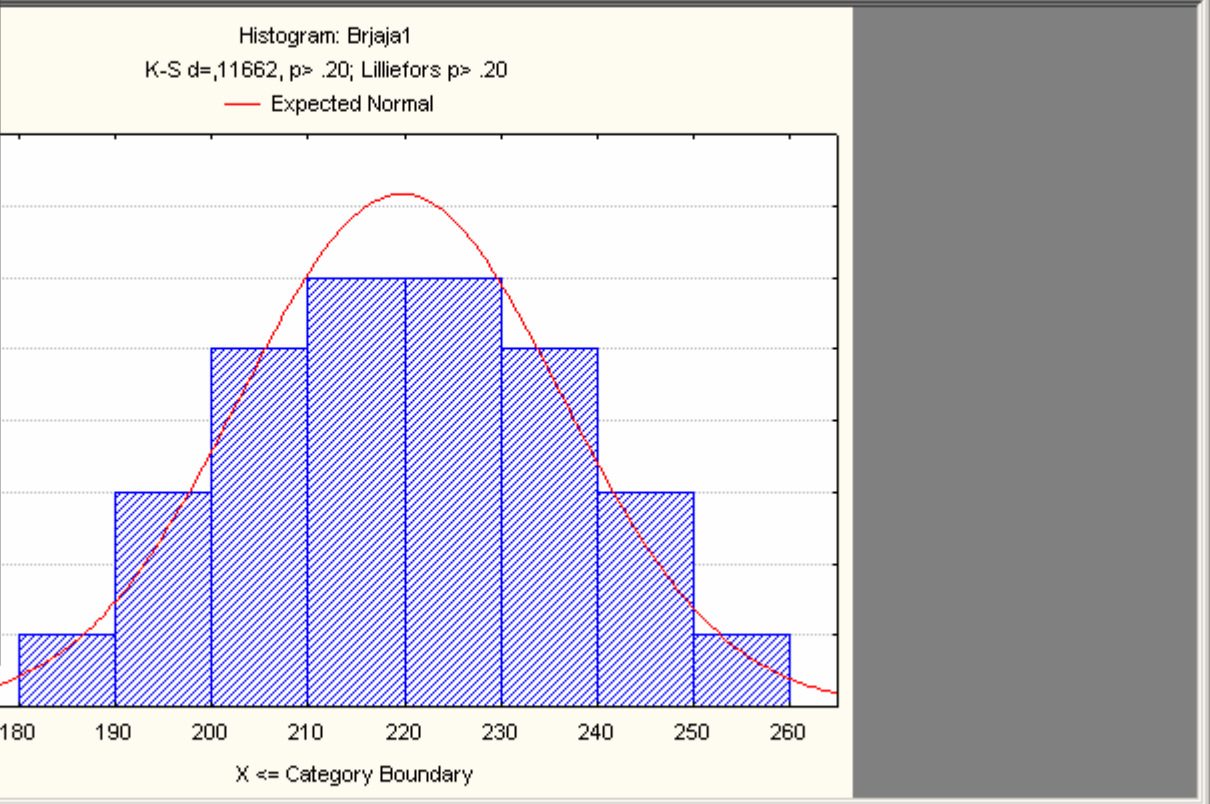
OK Cancel

- Workbook1*
- Basic Stat
- Descr
 - D
 - H

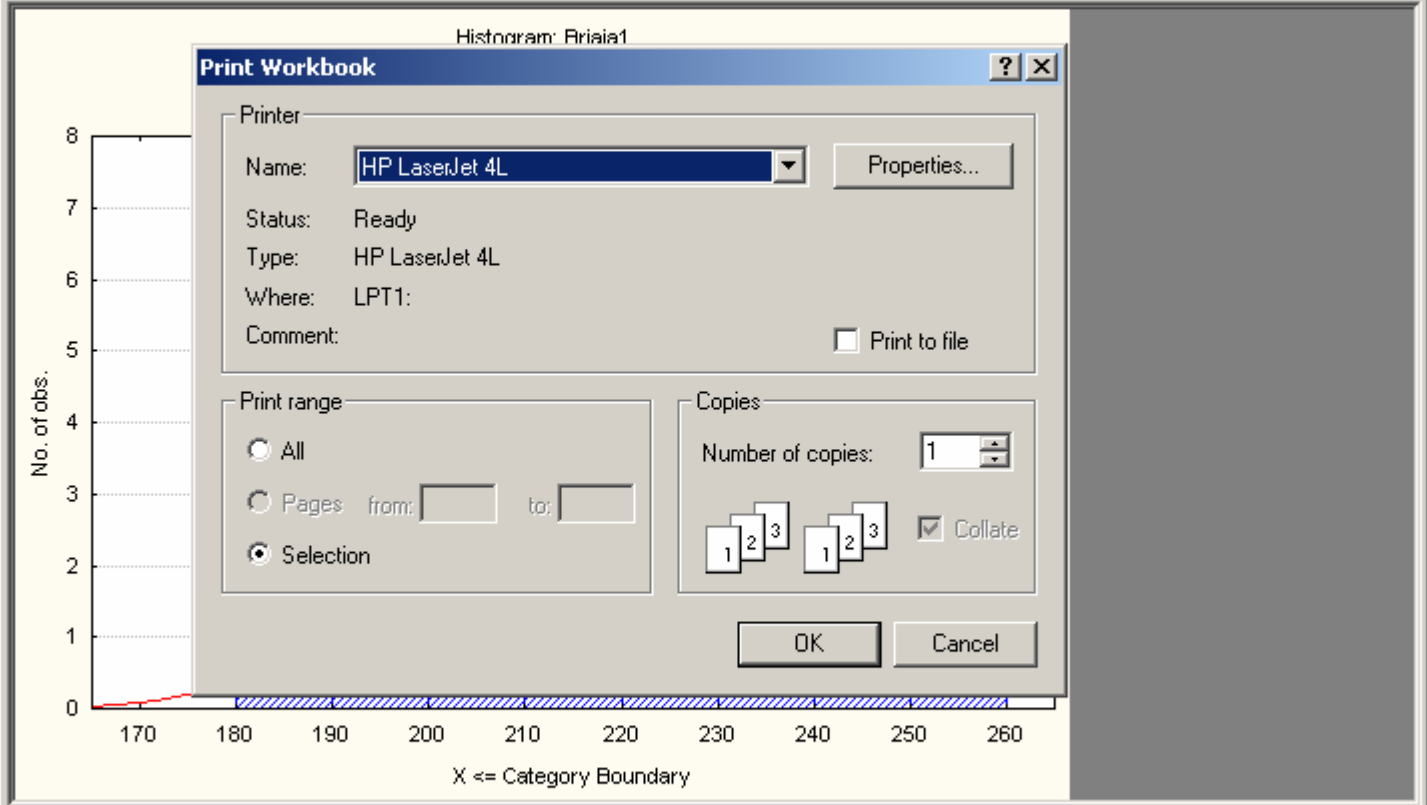


- New... Ctrl+N
- Open... Ctrl+O
- Close
- Save Ctrl+S
- Save As... F12
- Get External Data
- Output Manager...
- Workbook Page Setup...
- Print Setup...
- Print Preview
- Print... Ctrl+P**
- Print Active Item...
- Properties...
- 1 brjaja.sta
- 2 tezina_telad.sta
- 3 tezina_nesilica.sta
- 4 nesilice.stw
- Exit

Add to Workbook Add to Report



- Workbook6*
- Basic Stat
- Descr
 - D
 - H



Primjer 2

- ◆ u razdoblju od 1.12. do 5.12.2005. zabilježili smo tjelesnu težinu 30 nesilica Leghorn pasmine na farmi XY nakon završetka nesenja, a prije mitarenja.
- ◆ pronalaženje podataka i analiza

Open [?] [X]

Look in: [Back] [Up] [Down] [Grid]

- History
- Desktop
- My Computer
- My Network P...

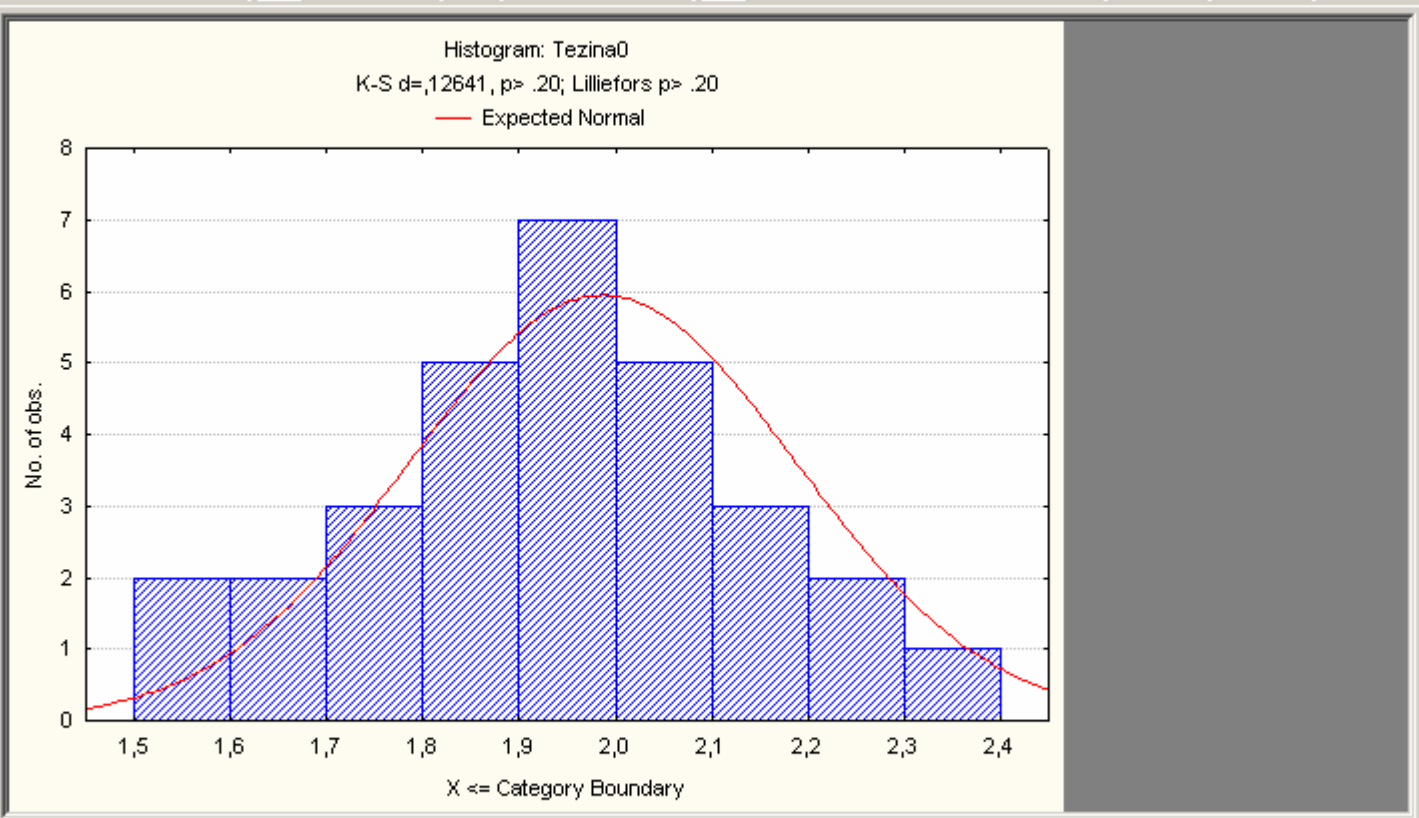
Statistika
brjaja.sta
tezina nesilica.sta
tezina_telad.sta

File name: [Down] [Open] [Cancel]

Files of type: [Down]



- Workbook1*
- Basic Stat
- Descr
 - D
 - H



Primjer 3

- ◆ u razdoblju od 1.4. do 1.10.2004. bilježili smo kretanje enzima alanin-aminotransferaze u pasa pasmine zlatni retriver. Psi obuhvaćeni ispitivanjem bili su ženskog spola, u starosti 1 do 2 godine te s područja Zagrebačke županije i grada Zagreba. Izmjerena količina alanin-aminotransferaze u krvi izražena je u jedinicama na litru (U / l).
- ◆ pronalaženje i analiza podataka

Open [?] [X]

Look in: [Back] [Up] [New Folder] [Grid]

- History
- Desktop
- My Computer
- My Network P...

Statistika

- ALT_pas.sta
- brjaja.sta
- tezina nesilica.sta
- tezina_telad.sta

File name: [v]

Files of type: [v]

[Open] [Cancel]



For Help, press F1

