

Statistika

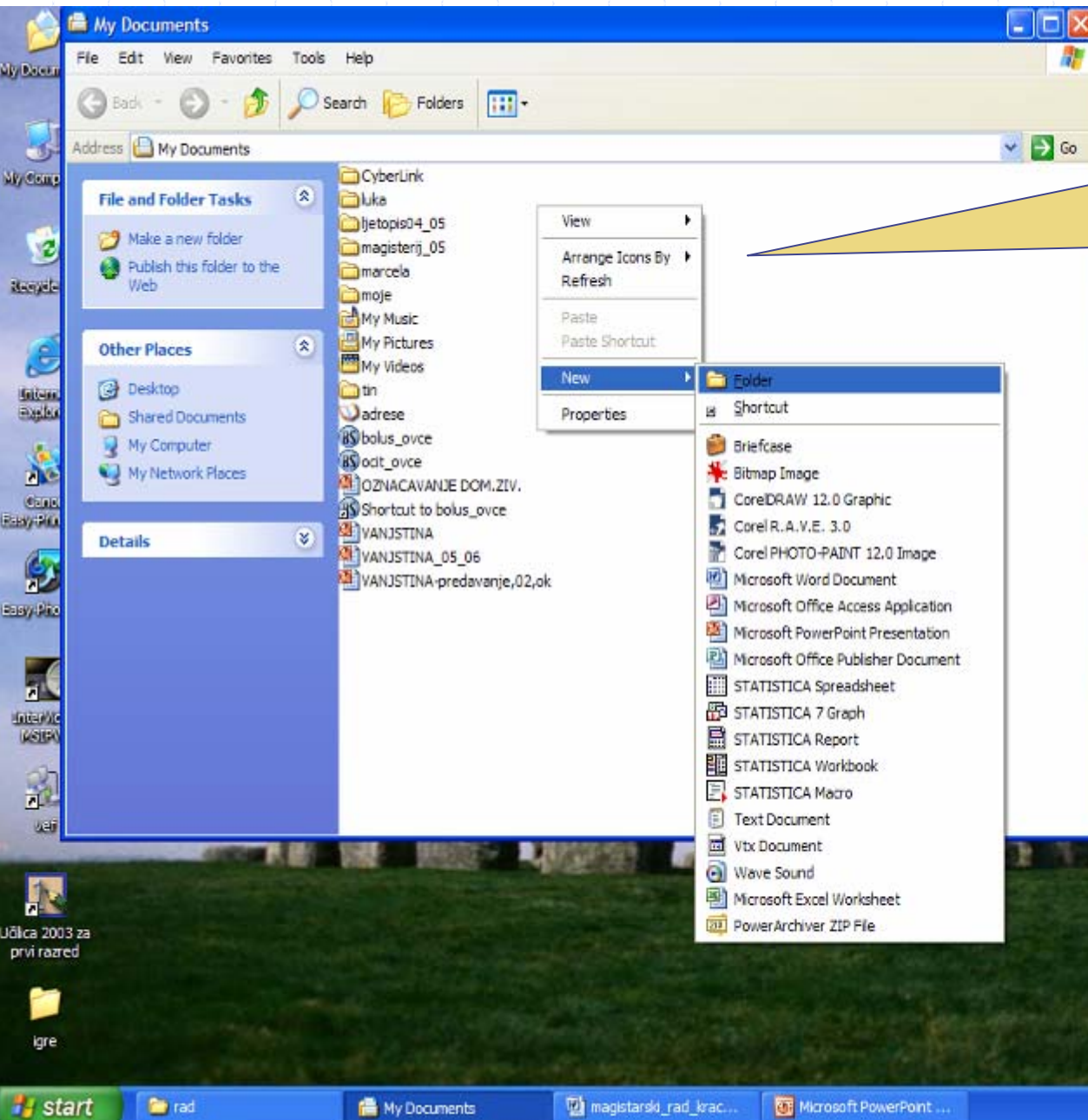
1. vježbe



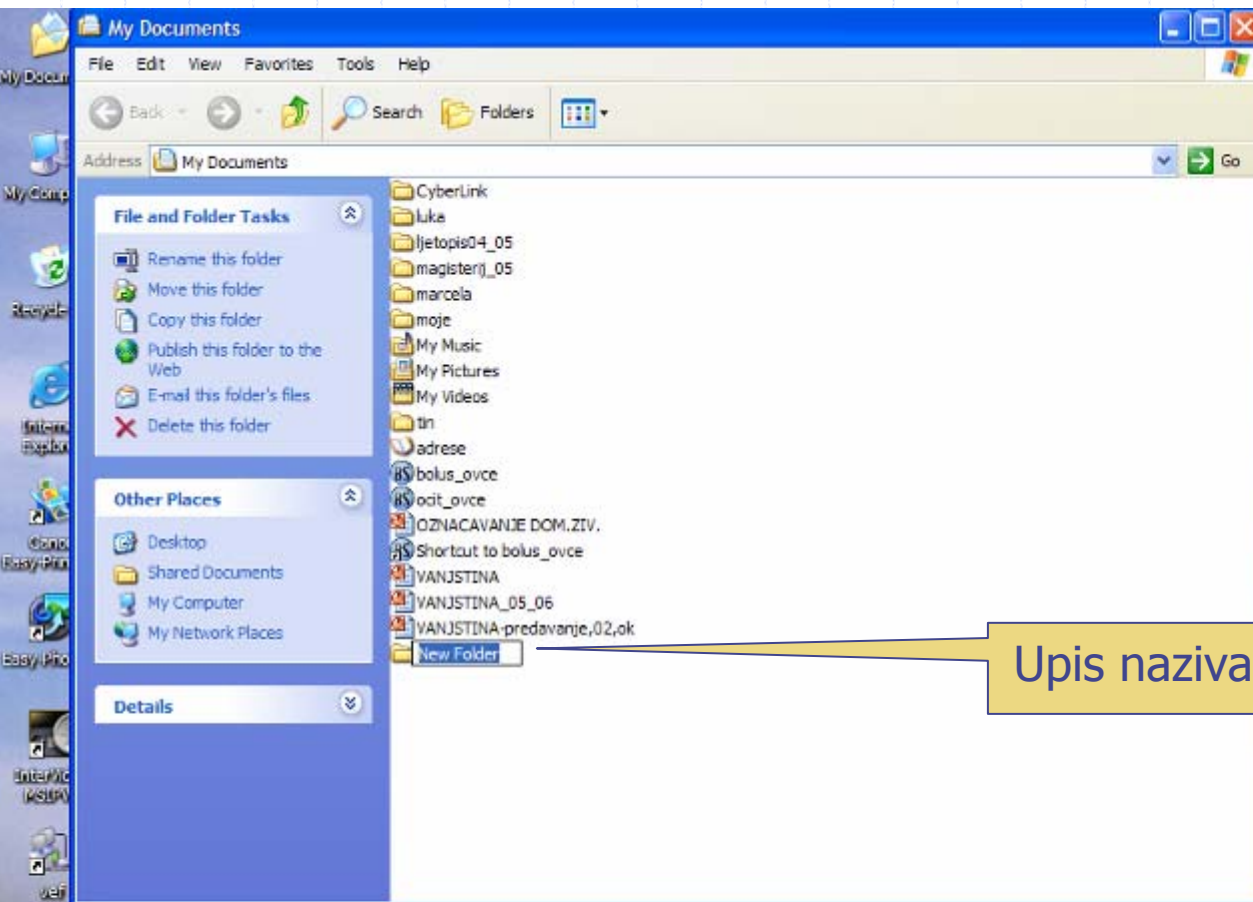
◆ Upoznavanje s osnovama rada na računalu:

- logiranje – korisničko ime i lozinka
- Start meni - programi
- Moji dokumenti
- Prečaci na Desktopu

◆ Stvaranje nove mape (foldera)



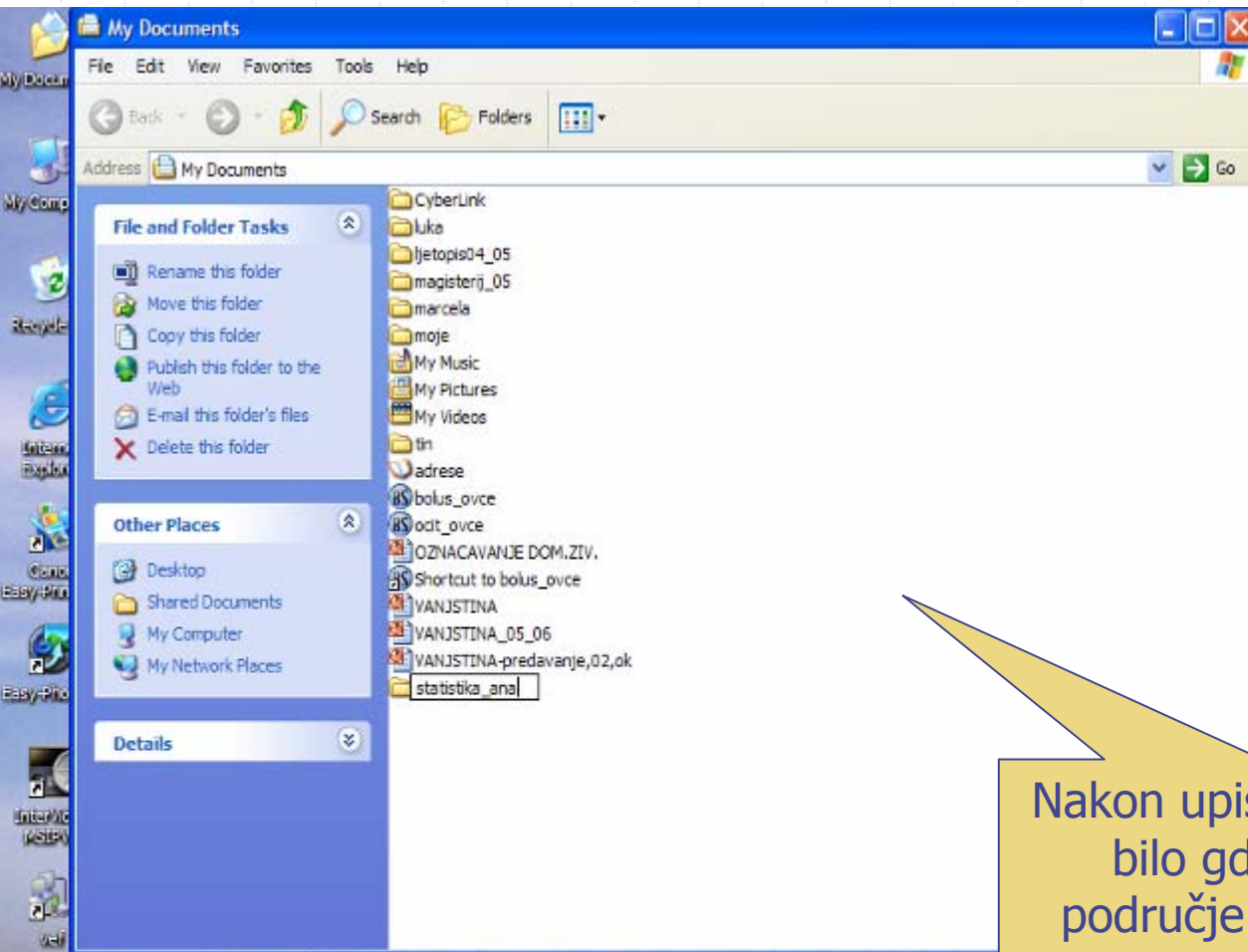
Stvaranje nove mape:
D tipka miša
- otvaranje padajućeg menija
L tipka miša
- izbor novog Foldera



Upis naziva mape

Učilica 2003 za prvi razred

igre



Nakon upisa imena kliknuti bilo gdje na prazno područje L tipkom miša (L tipka miša – za odabir i prihvaćanje pojedinih opcija)

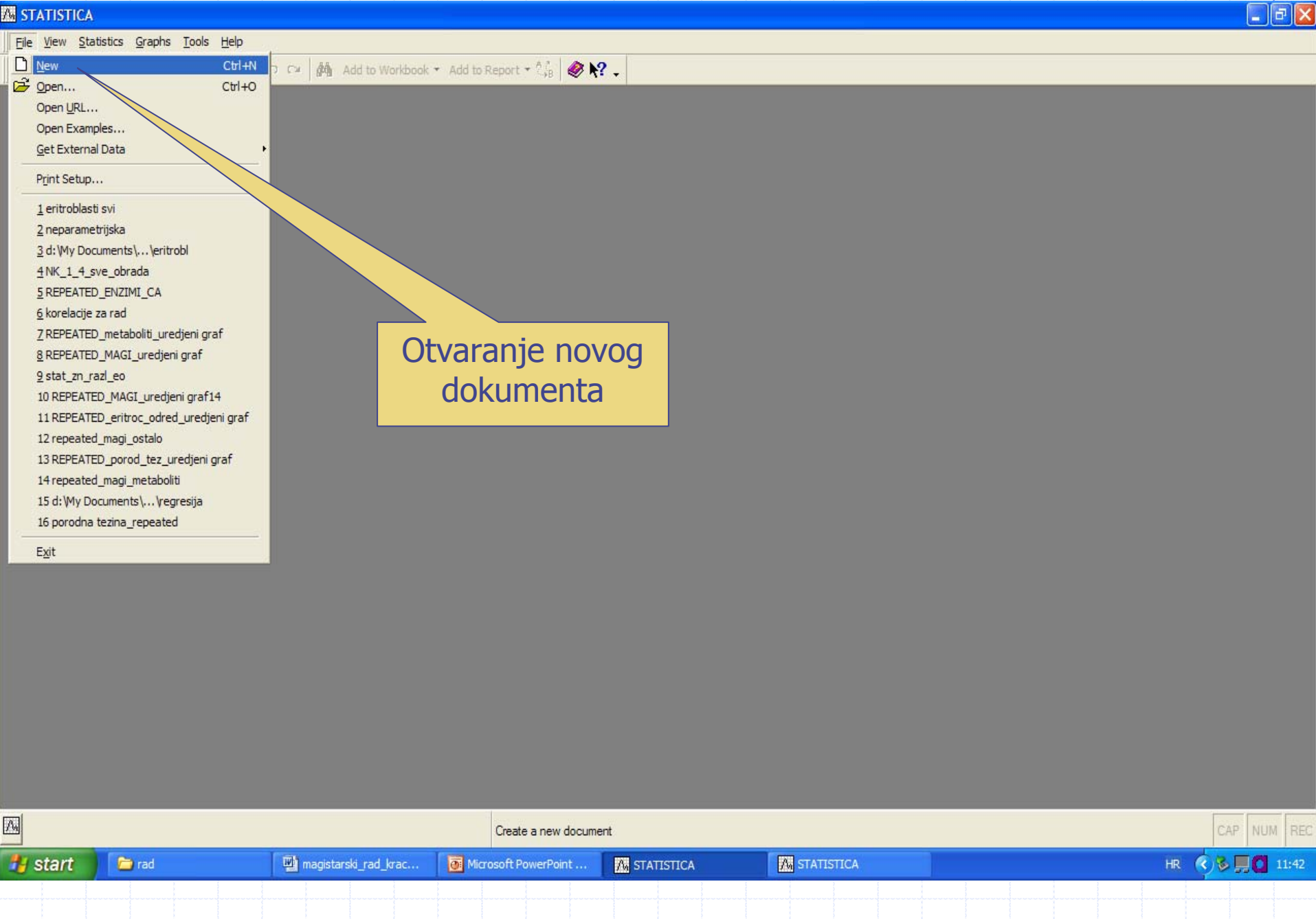
Statistica

- ◆ računalni program
- ◆ unos i obrada podataka

The image shows a Windows XP desktop with the Start menu open. The desktop background is a landscape with Stonehenge. The Start menu is divided into sections: 'User' (with a profile picture), 'Internet' (Internet Explorer), 'E-mail' (Microsoft Office Outlook), 'Microsoft Office Word', 'Nero Burning ROM', 'Windows Media Player', 'InterVideo MSPVS', 'Microsoft Office Excel 2003', and 'Microsoft Office PowerPoint 2003'. Below these is an 'All Programs' button. The main menu lists various installed applications, including PowerArchiver, Set Program Access and Defaults, Windows Catalog, Windows Update, AC3Filter, Accessories, CDEX, ChronoShutDown, CorelDRAW Graphics Suite 12, CyberLink PowerDVD, DivxG400, DVD Decrypter, DVD Shrink, ffdshow, Games, IrfanView, Lavasoft Ad-Aware SE Personal, MadOnion.com, Microsoft Office, Nero, PowerArchiver, PrintMe Internet Printing, QuickTime, REALTEK Ggabit and Fast Ethernet NIC Driver, Spybot - Search & Destroy, Startup, TuneUp Utilities 2004, Webteh, Adobe Reader 6.0, Internet Explorer, MSN, Outlook Express, Remote Assistance, and TuneUp Utilities 2004. The 'STATISTICA 7' application is highlighted in blue. A secondary menu is open for 'STATISTICA', showing 'STATISTICA' and 'STATISTICA Electronic Manual'.

Otvaranje programa





STATISTICA

File View Statistics Graphs Tools Help

- New Ctrl+N
- Open... Ctrl+O
- Open URL...
- Open Examples...
- Get External Data
- Print Setup...
- 1 eritroblasti svi
- 2 neparametrijska
- 3 d:\My Documents\... \eritrobl
- 4 NK_1_4_sve_obrada
- 5 REPEATED_ENZIMI_CA
- 6 korelacije za rad
- 7 REPEATED_metaboliti_uredjeni graf
- 8 REPEATED_MAGI_uredjeni graf
- 9 stat_zn_razl_eo
- 10 REPEATED_MAGI_uredjeni graf14
- 11 REPEATED_eritroc_odred_uredjeni graf
- 12 repeated_mag_i_ostalo
- 13 REPEATED_porod_tez_uredjeni graf
- 14 repeated_mag_i_metaboliti
- 15 d:\My Documents\... \regresija
- 16 porodna tezina_repeated
- Exit

Otvoravanje novog dokumenta

Create a new document

Broj promatranih svojstava

Broj promatranih slučajeva (jedinki skupa, životinja)

Create New Document

Macro (SVB) Program | Workbook | Browser Window
Spreadsheet | Report

Number of variables: 10
Number of cases: 10
Case name length: 0
MD code: -9999
Default data type: Double
Variable length: 8

Placement
 In a new Workbook
 As a stand-alone window

Var name prefix: Var
Var name start number: 1

Display format
General
Number
Date
Time
Scientific
Currency
Percentage
Fraction
Custom

Default

OK Cancel

OK = prihvaćanje odabranih mogućnosti

Promjena naziva
varijable
2 x L tipka miša

Data: Spreadsheet1 (10v by 10c)

	1 Var1	2 Var2	3 Var3	8 Var8	9 Var9	10 Var10
1						
2						
3						
4						
5						
6						
7						
8						
9						
10						

Data: Spreadsheet1 (10v by 10c)

	1 Var1	2 Var2	3 Var3	4 Var4	5 Var5
1					
2					
3					
4					
5					
6					
7					
8					
9					
10					

Variable 1

Arial 10 B I U x_2 x^2

Name: Type: Double OK

Measurement Type: Auto Length: 8

Excluded Label Case State MD code: -9999

Display format

- General
- Number
- Date
- Time
- Scientific
- Currency
- Percentage
- Fraction
- Custom

Long name (label or formula with): Function guide

Labels: use any text. Formulas: use variable names or v1, v2, ..., v0 is case #.
Examples: (a) = mean(v1:v3, sqrt(v7), AGE) (b) = v1+v2; comment (after;)

Unos naziva varijable

Data: Spreadsheet1 (10v by 10c)

	1 Var1	2 Var2	3 Var3	4 Var4	5 Var5
1					
2					
3					
4					
5					
6					
7					
8					
9					
10					

Variable 1

Name: Type:

Measurement Type: Length:

Excluded Label Case State MD code:

Display format

- General
- Number
- Date
- Time
- Scientific
- Currency
- Percentage
- Fraction
- Custom

Long name (label or formula with): Function guide

Labels: use any text. Formulas: use variable names or v1, v2, ..., v0 is case #.
Examples: (a) = mean(v1:v3, sqrt(v7), AGE) (b) = v1+v2; comment (after;)

OK = prihvaćanje
odabranih
postavki

Data: Spreadsheet1* (10v by 10c)

	1	2	3	4	5	6	7	8	9	10
	Visina	Var2	Var3	Var4	Var5	Var6	Var7	Var8	Var9	Var10
1										
2										
3										
6										
7										
8										
9										
10										

Promjena imena slučaja (oznaka jedinice)
2 x L tipka miša i upis

Data: Spreadsheet1* (10v by 10c)

	1 Visina	2 Var2	3 Var3	4 Var4	5 Var5	6 Var6	7 Var7	8 Var8	9 Var9	10 Var10
MB21										
2										
3										
4										
5										
6										
7										
8										
9										
10										

New... Ctrl+N
Open... Ctrl+O
Open URL...
Open Examples...
Close

Save Ctrl+S
Save As... F12
Save As PDF...
Get External Data
Add to Workbook
Add to Report

Output Manager...

Print Setup...
Print Preview
Print... Ctrl+P

Properties...

- 1 eritroblasti svi
- 2 neparametrijska
- 3 d:\My Documents\... \eritrobl
- 4 NK_1_4_sve_obrada
- 5 REPEATED_ENZIMI_CA
- 6 korelacije za rad
- 7 REPEATED_metaboliti_uredjeni graf
- 8 REPEATED_MAGI_uredjeni graf
- 9 stat_zn_razl_eo
- 10 REPEATED_MAGI_uredjeni graf14
- 11 REPEATED_eritroc_odred_uredjeni graf
- 12 repeated_mag_i_ostalo
- 13 REPEATED_porod_tez_uredjeni graf
- 14 repeated_mag_i_metaboliti
- 15 d:\My Documents\... \regresija
- 16 porodna tezina_repeated

Exit

Add to Workbook Add to Report

U

Vars Cases

	3	4	5	6	7	8	9	10
	Var3	Var4	Var5	Var6	Var7	Var8	Var9	Var1

Spremanje
podataka

STATISTICA - Spreadsheet1

File Edit View Insert Format Statistics Graphs Tools Data Window Help

Arial 10 B I U

Data: Spreadsheet1* (10v by 10c)

	1	2	3	4
	Visina	Var2	Var3	Var4
MB21				
2				
3				
4				
5				
6				
7				
8				
9				
10				

Save As

Save in: My Documents

- CyberLink
- luka
- ljetopis04_05
- magisterij_05
- marcela
- moje
- My Music
- My Pictures
- My Videos
- statistika_ana
- tin

File name: Spreadsheet1

Save as type: STATISTICA Spreadsheet Files (*.sta)

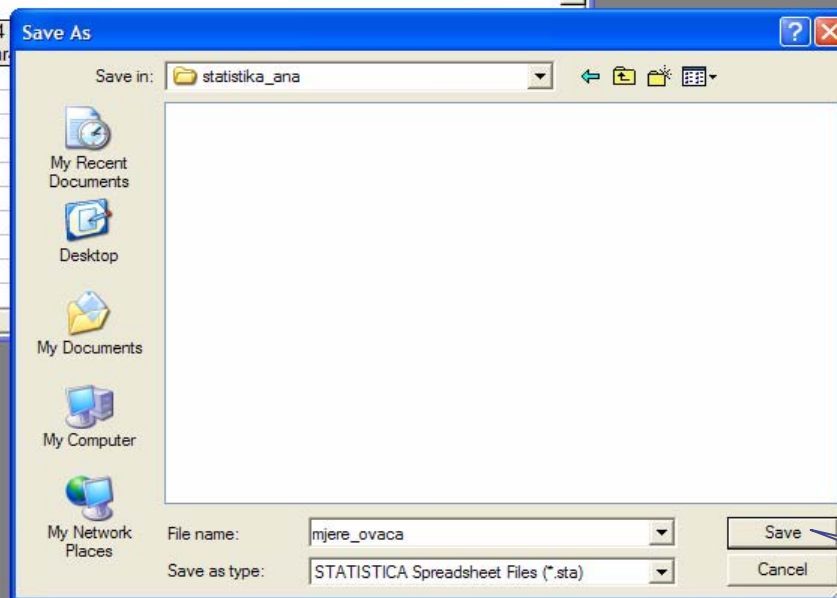
Save Cancel

Odabir mape 2 x L tipka miša

Upis naziva dokumenta

Data: Spreadsheet1* (10v by 10c)

	1	2	3	4
	Visina	Var2	Var3	Var4
MB21				
2				
3				
4				
5				
6				
7				
8				
9				
10				

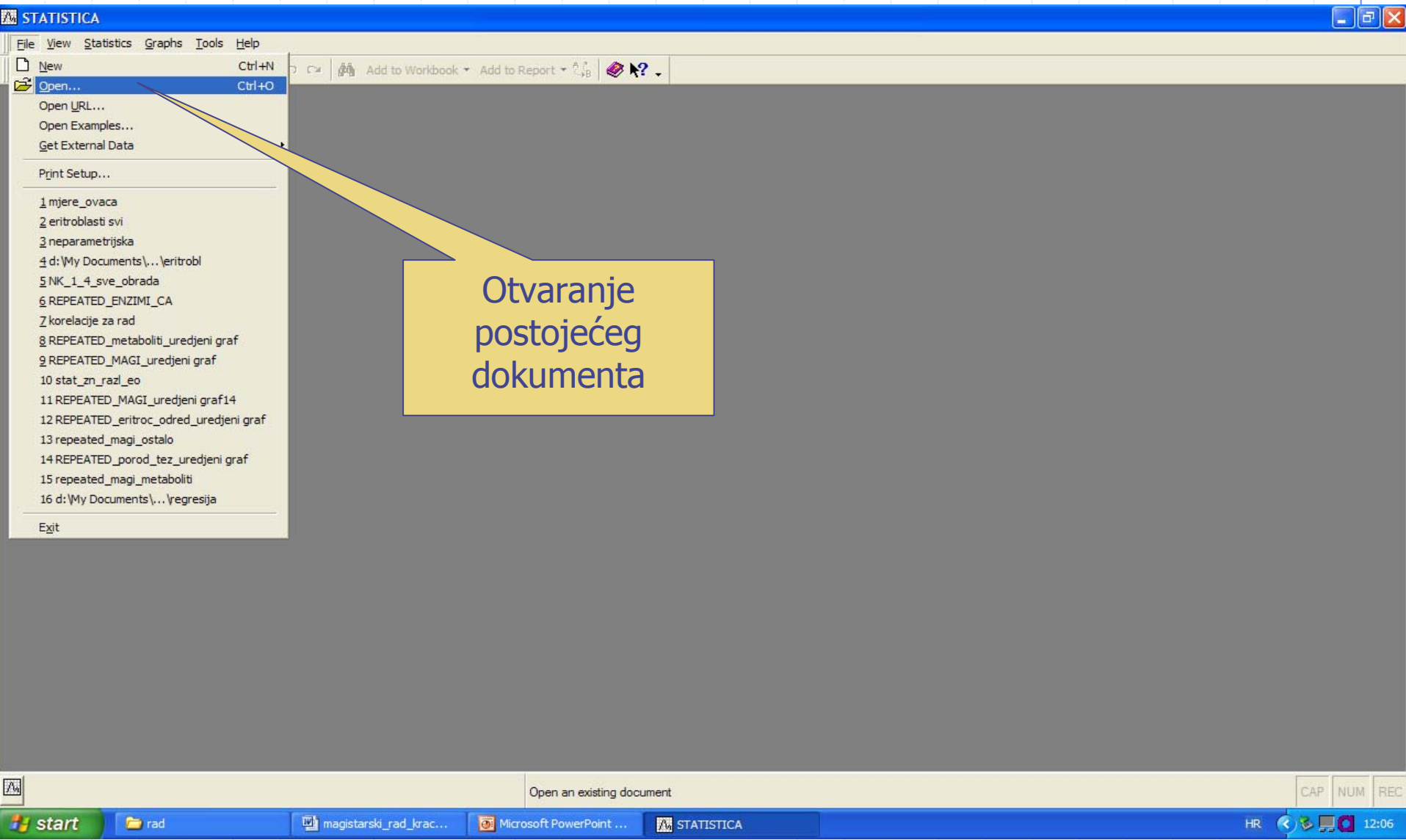


Spremanje
podataka

Data: mjere_ovaca (10v by 10c)

	1	2	3	4	5	6	7	8	9	10
	Visina	Var2	Var3	Var4	Var5	Var6	Var7	Var8	Var9	Var1
MB21										
2										
3										
4										
5										
6										
7										
8										
9										
10										

Na okviru dokumenta nalazi se ime pod kojim smo ga spremili



STATISTICA

File View Statistics Graphs Tools Help

- New Ctrl+N
- Open... Ctrl+O**
- Open URL...
- Open Examples...
- Get External Data
- Print Setup...
- 1 mjere_ovaca
- 2 eritroblasti svi
- 3 neparametrijska
- 4 d:\My Documents\... \eritrobl
- 5 NK_1_4_sve_obrada
- 6 REPEATED_ENZIMI_CA
- 7 korelacije za rad
- 8 REPEATED_metaboliti_uredjeni graf
- 9 REPEATED_MAGI_uredjeni graf
- 10 stat_zn_razl_eo
- 11 REPEATED_MAGI_uredjeni graf14
- 12 REPEATED_eritroc_odred_uredjeni graf
- 13 repeated_mag_i_ostalo
- 14 REPEATED_porod_tez_uredjeni graf
- 15 repeated_mag_i_metaboliti
- 16 d:\My Documents\... \regresija
- Exit

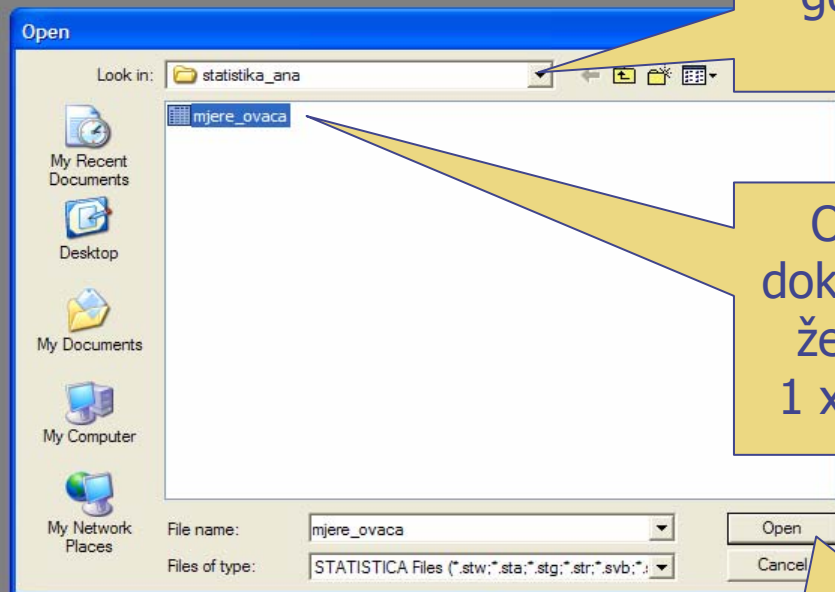
Otvaranje
postojećeg
dokumenta

Open an existing document

CAP NUM REC

start rad magistarski_rad_krac... Microsoft PowerPoint ... STATISTICA

HR 12:06



Otvaranje mape gdje se nalazi dokument

Označavanje dokumenta kojeg želimo otvoriti
1 x L tipka miša

Naredba za otvaranje označenog dokumenta

Data: mjere_ovaca (10v by 10c)

	1 Visina	2 Var2	3 Var3	4 Var4	5 Var5	6 Var6	7 Var7	8 Var8	9 Var9	10 Var10										
MB21																				
2																				
3																				
4																				
5																				
6																				
7																				
8																				
9																				
10																				

Primjer 1

- ◆ pratili smo proizvodnost 30 nesilica hibrida X na farmi XY promatrajući broj snesenih jaja u razdoblju od 1.1.2004. do 1.12.2004.
- ◆ unos podataka

broj nesilice	broj jaja	broj nesilice	broj jaja	broj nesilice	broj jaja
312	181	211	216	167	225
245	191	198	219	214	231
320	196	178	220	236	231
363	197	264	220	341	232
289	205	159	220	306	234
270	207	311	221	194	235
291	208	333	221	185	241
314	208	301	222	243	242
268	210	249	222	218	246
275	211	232	223	190	256



Shortcut (2) to sas.exe

Adobe PhotoDelu...

My Documents

My Computer

mojastrana...

My Network Places

POSLIJEDIP...

Recycle Bin

precaci

Internet Explorer

Click Me

Incredimail

ImageJ

Windows Media Player

WinZip

STATISTICA

STATISTICA
Release: 6

This product licensed to:
Stocarsvo-kabalin
Veterinarski fakultet
agf303b080207 ar

Copyright © StatSoft, Inc. 1994-2003.
All rights reserved. This program is
protected by US and international
copyright laws.

 **StatSoft**

- New Ctrl+N
- Open... Ctrl+O
- Get External Data
- Print Setup...
- Exit

Create New Document

Macro (SVB) Program | Workbook | Browser Window | Spreadsheet | Report

Number of variables: 1
Number of cases: 30
Case name length: 0
MD code: -9999
Default data type: Double
Variable length: 8

Placement:
 In a new Workbook
 As a stand-alone window

Var name prefix: Var
Var name start number: 1

Display format:
General
Number
Date
Time
Scientific
Currency
Percentage
Fraction
Custom

Default

OK Cancel

	1 Var1
1	
2	
3	
4	
5	
6	
7	
8	
9	
10	
11	
12	
13	
14	
15	
16	
17	
18	
19	
20	
21	
22	
23	
24	
25	
26	
27	
28	
29	
30	

Variable 1

Arial 10 B I U x_2 x^2

Name: Br.jaja Type: Double OK

Measurement Type: Auto Length: 8 Cancel

Excluded Label Case State MD code: -9999 << >>

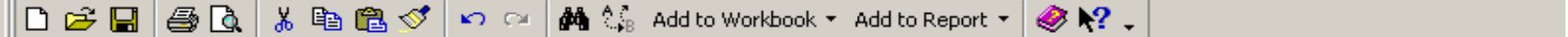
Display format:

- General
- Number
- Date
- Time
- Scientific
- Currency
- Percentage
- Fraction
- Custom

All Specs...
Text Labels...
Values/Stats...
Properties...

Long name (label or formula with Functions): Function guide

Labels: use any text. Formulas: use variable names or v1, v2, ..., v0 is case #.
Examples: (a) = mean(v1:v3, sqrt(v7), AGE) (b) = v1+v2; comment (after.)



1	Brjaja1																			
13	220																			
14	220																			
15	220																			
16	221																			
17	221																			
18	222																			
19	222																			
20	223																			
21	225																			
22	231																			
23	231																			
24	232																			
25	234																			
26	235																			
27	241																			
28	242																			
29	246																			
30	256																			

- New... Ctrl+N
- Open... Ctrl+O
- Close
- Save Ctrl+S
- Save As... F12**
- Get External Data
- Add to Workbook
- Add to Report
- Output Manager...
- Print Setup...
- Print Preview
- Print... Ctrl+P
- Properties...
- 1 brjaja.sta
- 2 ALT_pas.sta
- 3 tezina_telad.sta
- 4 tezina nesilica.sta
- 5 nesilice.stw
- Exit

The main area of the application is a large spreadsheet grid. A few cells in the lower-left corner contain the following values:

19	222
20	223
21	225

	1	
	Brjaja1	
1	181	
2	191	
3	196	
4	197	
5	205	
6	207	
7	208	
8	208	
9	210	
10	211	
11	216	
12	219	
13	220	
14	220	
15	220	
16	221	
17	221	
18	222	
19	222	
20	223	
21	225	

Save As

Save in:

- History
- Desktop
- My Computer
- My Network P...

File name:

Save as type:

Primjer 2

- ◆ u razdoblju od 1.12. do 5.12.2005. zabilježili smo tjelesnu težinu 30 nesilica hibrida X na farmi XY nakon završetka nesenja, a prije mitarenja.
- ◆ unos podataka

broj nesilice	težina nesilice (kg)	broj nesilice	težina nesilice (kg)	broj nesilice	težina nesilice (kg)
312	1,8	211	1,9	167	2,0
245	1,7	198	2,1	214	2,2
320	1,6	178	2,2	236	2,3
363	1,6	264	2,0	341	2,1
289	1,8	159	2,0	306	2,1
270	1,7	311	1,9	194	2,3
291	1,8	333	2,0	185	2,2
314	1,9	301	2,1	243	2,0
268	2,0	249	1,9	218	2,4
275	1,9	232	2,0	190	2,1

- New Ctrl+N
- Open... Ctrl+O
- Get External Data
- Print Setup...
- Exit

Create New Document

Macro (SVB) Program | Spreadsheet | Workbook | Browser Window | Report

Number of variables: 1
Number of cases: 30
Case name length: 0
MD code: -9999
Default data type: Double
Variable length: 8

Placement:
 In a new Workbook
 As a stand-alone window

Var name prefix: Var
Var name start number: 1

Display format:
General
Number
Date
Time
Scientific
Currency
Percentage
Fraction
Custom

Default

OK Cancel

STATISTICA - [Data: Spreadsheet3 (1v by 30c)]

File Edit View Insert Format Statistics Graphs Tools Data Window Help

Add to Workbook Add to Report

Arial 10 **B** *I* U

 .00 +.00

1	Tezinač																															
1																																
2																																
3																																
4																																
5																																
6																																
7																																
8																																
9																																
10																																
11																																
12																																
13																																
14																																
15																																
16																																
17																																
18																																
19																																
20																																
21																																

C1,V1 Sel:OFF Weight:OFF CAP NUM REC

Start | 8:35

Primjer 3

- ◆ u razdoblju od 1.4. do 1.10.2004. bilježili smo kretanje enzima alanin-aminotransferaze u 30 pasa pasmine zlatni retriver. Psi obuhvaćeni ispitivanjem bili su ženskog spola, u starosti 1 do 2 godine te s područja Zagrebačke županije i grada Zagreba. Izmjerena količina alanin-aminotransferaze u krvi izražena je u jedinicama na litru (U / l).
- ◆ unos podataka

Tetovir	ALT (U/I)	Tetovir	ALT (U/I)	Tetovir	ALT (U/I)
1265	21	8885	82	7106	87
3468	25	7888	82	6107	87
2070	28	2489	82	1109	93
4573	45	3591	82	9110	93
3574	45	6494	83	2111	98
7575	56	7596	83	4114	98
6578	56	8297	83	8116	99
2480	70	9100	83	2118	100
1381	70	8101	83	5121	101
1783	70	2104	87	4124	102

Create New Document

Macro (SVB) Program | Spreadsheet | Workbook | Browser Window | Report

Number of variables: 1
Number of cases: 30
Case name length: 0
MD code: -9999
Default data type: Double
Variable length: 8

Placement:
 In a new Workbook
 As a stand-alone window

Var name prefix: Var
Var name start number: 1

Display format:
General
Number
Date
Time
Scientific
Currency
Percentage
Fraction
Custom

Default

OK Cancel

Create New Document

Macro (SVB) Program | Spreadsheet | Workbook | Browser Window | Report

Number of variables: 1
Number of cases: 30
Case name length: 0
MD code: -9999
Default data type: Double
Variable length: 8

Placement:
 In a new Workbook
 As a stand-alone window

Var name prefix: Var
Var name start number: 1

Display format:
General
Number
Date
Time
Scientific
Currency
Percentage
Fraction
Custom

Default

OK Cancel

- New... Ctrl+N
- Open... Ctrl+O
- Close
- Save Ctrl+S
- Save As... F12**
- Get External Data
- Add to Workbook
- Add to Report
- Output Manager...
- Print Setup...
- Print Preview
- Print... Ctrl+P
- Properties...
- 1 brjaja.sta
- 2 ALT_pas.sta
- 3 tezina_telad.sta
- 4 tezina nesilica.sta
- 5 nesilice.stw
- Exit

19	222																			
20	223																			
21	225																			

Statistika

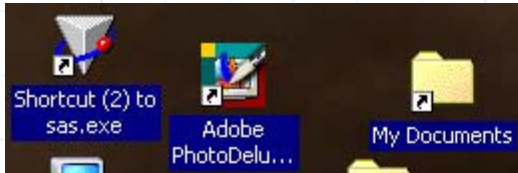
2. vježbe

Statistica

- ◆ računalni program
- ◆ pronalaženje unesenih podataka i njihova obrada

Primjer 1

- ◆ pratili smo proizvodnost 30 nesilica Leghorn pasmine na farmi XY promatrajući broj snesenih jaja u razdoblju od 1.1.2004. do 1.12.2004.
- ◆ pronalaženje podataka i analiza



Novi Officeov dokument
Otvori Officeov dokument
Windows Update
WinZip
Click Me
Uninstall Click Me

Programs
Documents
Settings
Search
Help
Run...
Log Off akabalin...
Shut Down...

Accessories
Alati Microsoft Officea
BJ Printer
DivX
ImageJ
IncrediMail
Merck Home Edition
Norton Ghost 2001
Picture Package
ScreenSaver.com
Sophos Anti-Virus
Startup
WinZip
Acrobat Reader 5.0
IncrediMail
Internet Explorer
Microsoft Access
Microsoft Excel
Microsoft PowerPoint
Microsoft Word
Outlook Express
Adobe
Windows Media Player
Power Scan
STATISTICA 6

Windows 2000 Professional



STATISTICA Electronic Manual
STATISTICA



Shortcut (2) to sas.exe

Adobe PhotoDelu...

My Documents

My Computer

mojastrana...

pilici_dob

My Network Places

POSLIJEDIP...

Recycle Bin

precaci

Internet Explorer

Click Me

IncrediMail

ImageJ

Windows Media Player

WinZip

STATISTICA

STATISTICA
Release: 6

This product licensed to:

Stocarstvo-kabalin
Veterinarski fakultet
agr303b080207 ar

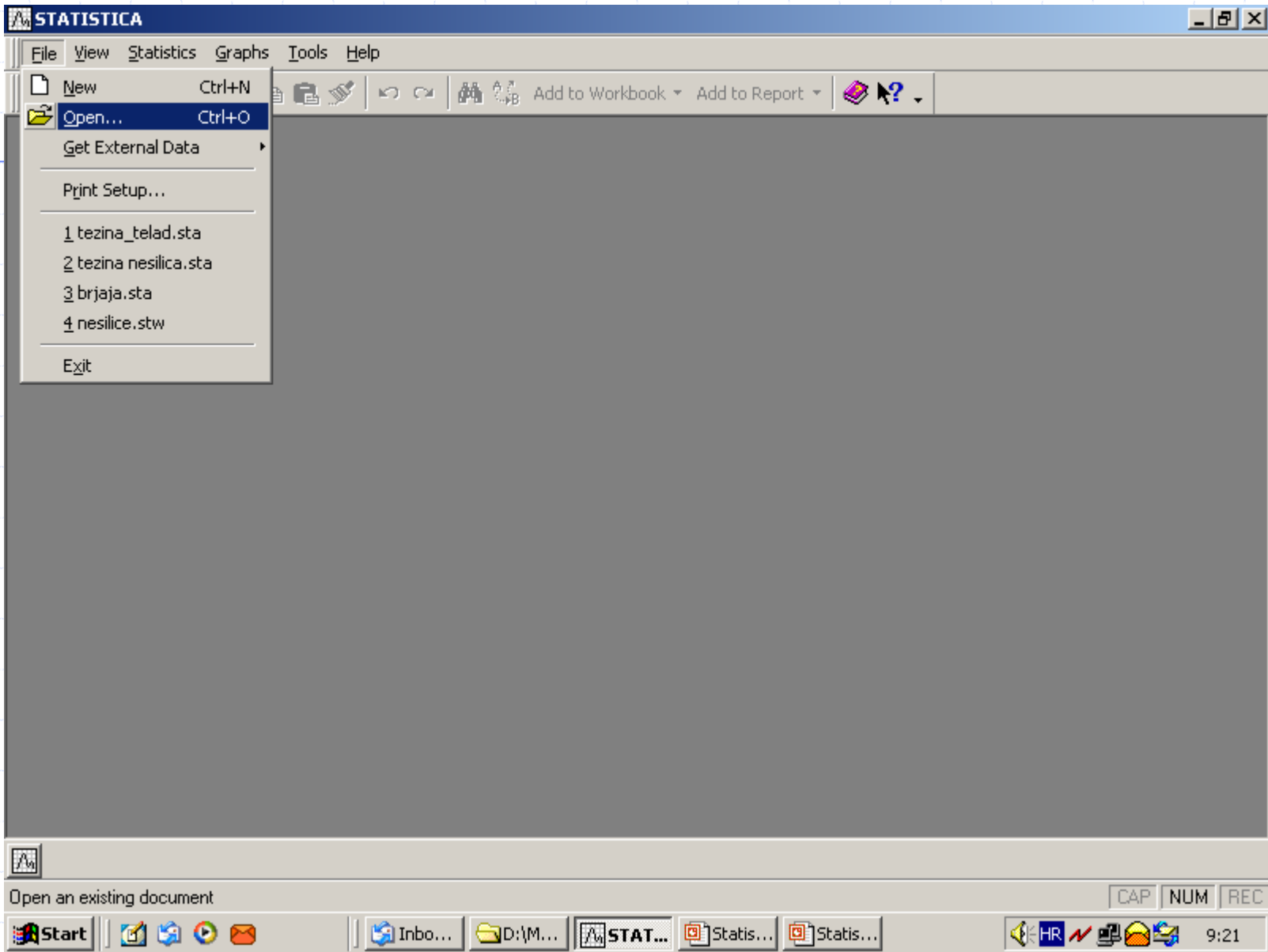
Copyright © StatSoft, Inc. 1994-2003.
All rights reserved. This program is
protected by US and international
copyright laws.

 StatSoft

Start

Presentation1

HR 8:50



Open [?] [X]

Look in: [Back] [Up] [Down] [Grid]

- History
- Desktop
- My Computer
- My Network P...

Statistika
brjaja.sta
tezina nesilica.sta
tezina_telad.sta

File name: [Down]

Files of type: [Down]

[Open] [Cancel]

STATISTICA - [Data: Spreadsheet2* (1v by 30c)]

File Edit View Insert Format Statistics Graphs Tools Data Window Help

Add to Workbook
 ▼
 Add to Report
 ▼

Arial
 ▼
 10
 ▼
B
I
U
+
+
+
+
+
+

	1																							
	Brjaja1																							
1	181																							
2	191																							
3	196																							
4	197																							
5	205																							
6	207																							
7	208																							
8	208																							
9	210																							
10	211																							
11	216																							
12	219																							
13	220																							
14	220																							
15	220																							
16	221																							
17	221																							
18	222																							
19	222																							
20	223																							
21	225																							

For Help, press F1

C1,V1 181 Set:OFF Weight:OFF CAP NUM REC

	1	2	3	9	10	11
	BrJaja	Var1	Var2	Var8	Var9	Var10
13	219					
14	220					
15	220					
16	221					
17	223					
18	223					
19	224					
20	224					
21	224					
22	225					
23	226					
24	228					
25	229					
26	232					
27	234					
28	240					
29	242					
30	256					

- Basic Statistics/Tables
- Multiple Regression
- ANOVA
- Nonparametrics
- Distribution Fitting
- Advanced Linear/Nonlinear Models
- Multivariate Exploratory Techniques
- Industrial Statistics & Six Sigma
- Power Analysis
- Neural Networks
- Data-Mining
- Quality Control, QC Data Mining, and Root Cause Analysis
- Text Mining and Document Retrieval
- Statistics of Block Data
- STATISTICA Visual Basic
- Probability Calculator

STATISTICA - [Data: Spreadsheet1* (11v by 30c)]

File Edit View Insert Format Statistics Graphs Tools Data Window Help

Resume... Ctrl+R

Arial 10

	1	2	3	9	10	11
	BrJaja	Var1	Var2	Var8	Var9	Var10
13	219					
14	220					
15	220					
16	221					
17	223					
18	223					
19	224					
20	224					
21	224					
22	225					
23	226					
24	228					
25	229					
26	232					
27	234					
28	240					
29	242					
30	256					

- Basic Statistics/Tables
- Multiple Regression
- ANOVA
- Nonparametrics
- Distribution Fitting
- Advanced Linear/Nonlinear Models
- Multivariate Exploratory Techniques
- Industrial Statistics & Six Sigma
- Power Analysis
- Neural Networks
- Data-Mining
- Quality Control, QC Data Mining, and Root Cause Analysis
- Text Mining and Document Retrieval
- Statistics of Block Data
- STATISTICA Visual Basic
- Probability Calculator

Starts up Basic Statistics/Tables C1,V1 164 Sel:OFF Weight:OFF CAP NUM REC

	1	2	3	10	11
	BrJaja	Var1	Var2	Var9	Var10
13	219				
14	220				
15	220				
16	221				
17	223				
18	223				
19	224				
20	224				
21	224				
22	225				
23	226				
24	228				
25	229				
26	232				
27	234				
28	240				
29	242				
30	256				

Basic Statistics and Tables: Spreadsheet1

Quick

- Descriptive statistics
- Correlation matrices
- t-test, independent, by groups
- t-test, independent, by variables
- t-test, dependent samples
- t-test, single sample
- Breakdown & one-way ANOVA
- Frequency tables
- Tables and banners
- Multiple response tables
- Difference tests: r, %, means
- Probability calculator

Buttons: OK, Cancel, Options, Open Data, SELECT CASES, W

	1	2
	BrJaja	Var1
13	219	
14	220	
15	220	
16	221	
17	223	
18	223	
19	224	
20	224	
21	224	
22	225	
23	226	
24	228	
25	229	
26	232	
27	234	
28	240	
29	242	
30	256	

Descriptive Statistics: Spreadsheet 1

Variables: BrJaja

Summary

Quick | **Advanced** | Normality | Prob. & Scatterplots | Categ. plots | Options

Summary: Descriptive statistics

Compute statistics:

- Location, valid N
 - Valid N
 - Mean
 - Sum
 - Median
 - Mode
 - Geom. mean
 - Harm. mean
- Variation, moments
 - Standard Deviation
 - Variance
 - Std. err. of mean
 - Conf. limits for means
 - Interval: 95.00 %
 - Skewness
 - Std. err., Skewness
 - Kurtosis
 - Std. err., Kurtosis
- Percentiles, ranges
 - Minimum & maximum
 - Lower & upper quartiles
 - Percentile boundaries
 - First: 10.00 %
 - Second: 90.00 %
 - Range
 - Quartile range

Select all stats | Reset

Save settings as default

Options

SELECT CASES

Wghtd momnts

DF = W-1 N-1

MD deletion

Casewise

Pairwise

Cancel

- New... Ctrl+N
- Open... Ctrl+O
- Close
- Save Ctrl+S
- Save As... F12
- Get External Data
- Output Manager...
- Workbook Page Setup...
- Print Setup...
- Print Preview
- Print... Ctrl+P**
- Print Active Item...
- Properties...
- 1 brjaja.sta
- 2 tezina_telad.sta
- 3 tezina nesilica.sta
- 4 nesilice.stw
- Exit

Toolbar: Add to Workbook, Add to Report, Bold (B), Italic (I), Underline (U), Text Color, Fill Color, Font Size, Number Format, Undo, Redo, Copy, Paste, Print, Help, etc.

Descriptive Statistics (brjaja.sta)

	Mean	Median	Mode	Frequency of Mode	Minimum	Maximum	Variance	Std.Dev.
1	219,7000	220,5000	220,0000	3	181,0000	256,0000	279,0448	16,70463

STATISTICA - [Workbook7* - Descriptive Statistics (brjaja.sta)]

File Edit View Insert Format Statistics Graphs Tools Data Workbook Window Help

Clipboard icons: Add to Workbook, Add to Report

Arial 10 Bold Italic Underline Text alignment icons

Workbook7*
Basic Stat
Descr
D

Descriptive Statistics (brjaja.sta)

Variable	Mean	Variance	Std.Dev.
Brjaja1		9,0448	16,70463

Valid Print Workbook

Printer: HP LaserJet 4L (Ready, LPT1)

Print range: All, Pages from: [] to: [], Selection

Copies: Number of copies: 1, Collate:

Buttons: OK, Cancel, Print to file

Descriptive Statistics (brjaja.sta)

Descriptive Statistics:...

For Help, press F1 C1,V1 30 CAP NUM REC

Windows taskbar: Start, Taskbar icons (Inbox, My Documents, STATISTICA, Statistika.ppt), System tray (HR, 9:27)

Workbook7*
Basic Stat
Descr

Descriptive Statistics (brjaja.sta)

Variable	Valid	Print	Workbook	riance	Std.Dev.
Brjaja1					16,70463

HP LaserJet 4L Document Properties

Layout Paper/Quality

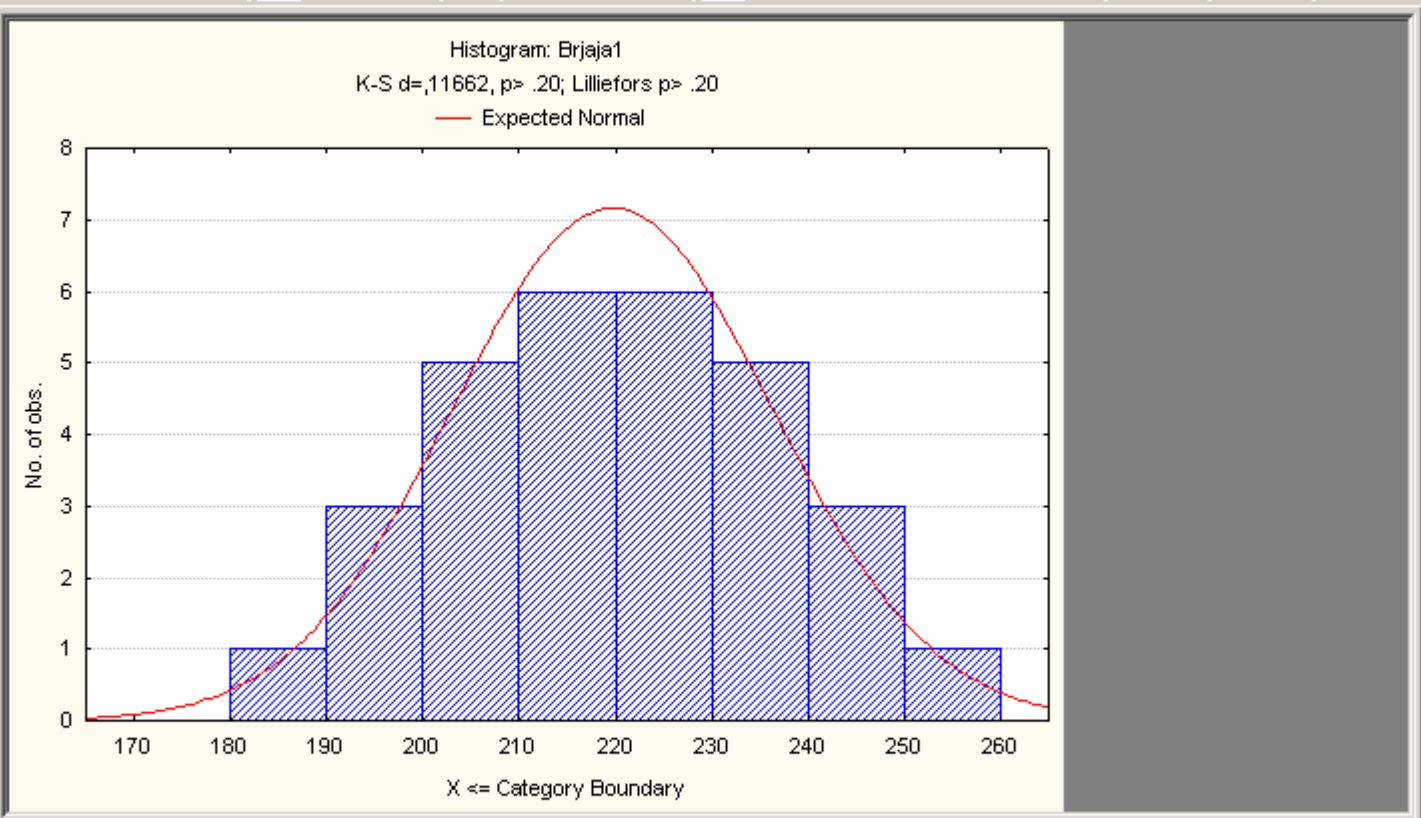
Orientation: Portrait Landscape

Page Order: Front to Back Back to Front

Pages Per Sheet: 1

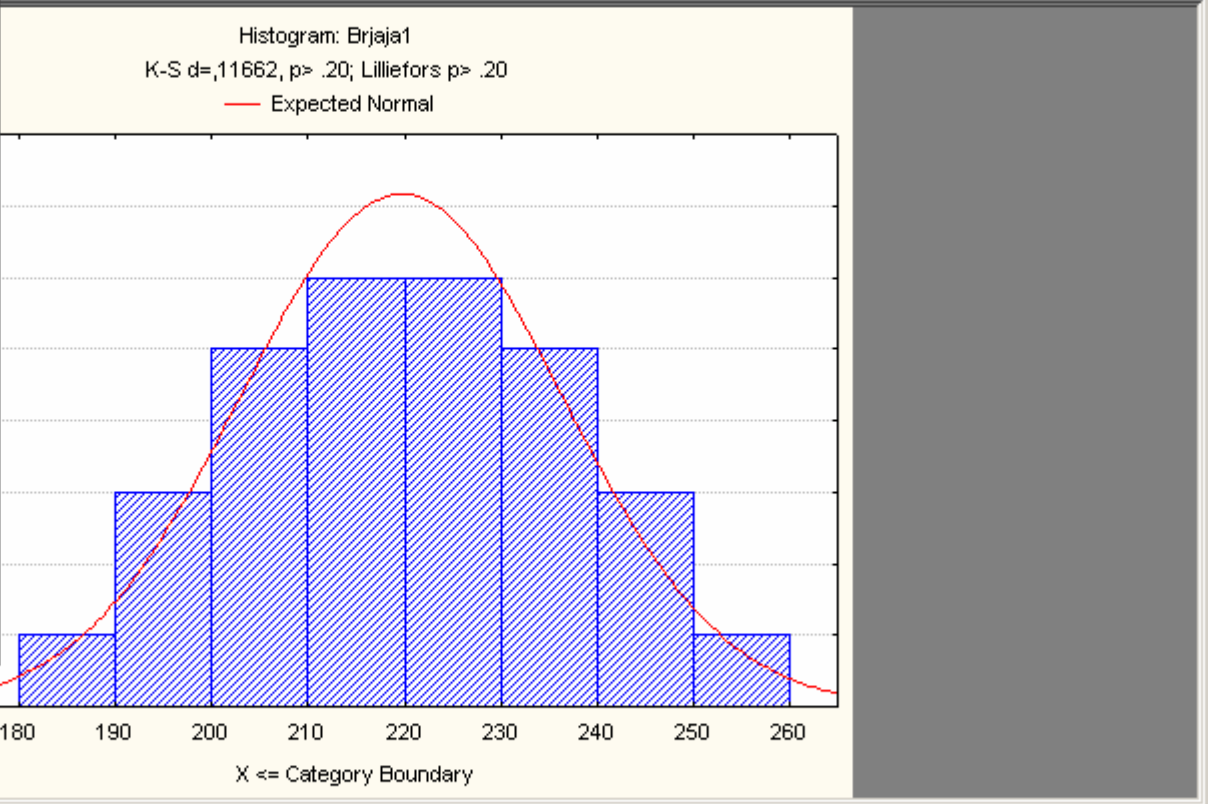
Advanced...

- Workbook1*
- Basic Stat
- Descr
 - D
 - H

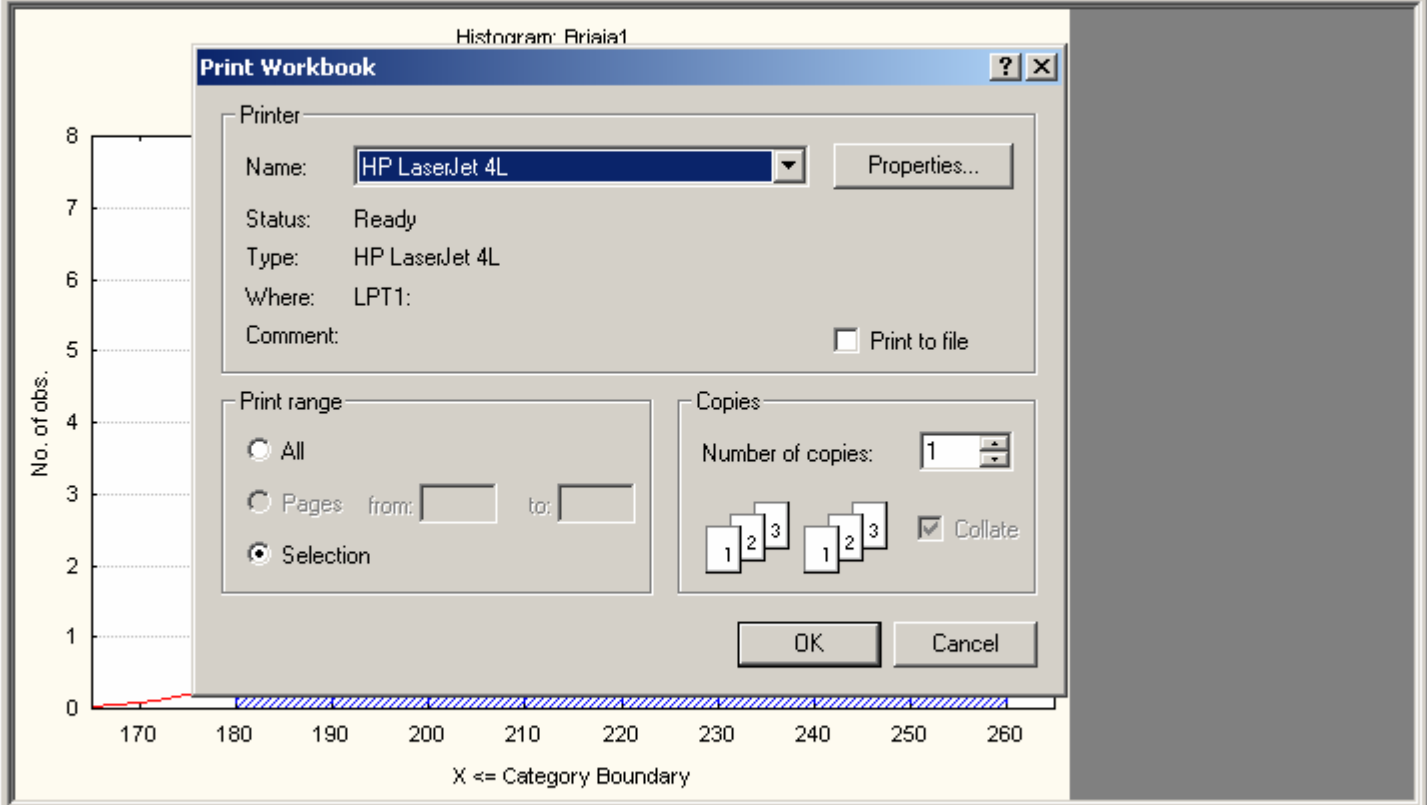


- New... Ctrl+N
- Open... Ctrl+O
- Close
- Save Ctrl+S
- Save As... F12
- Get External Data
- Output Manager...
- Workbook Page Setup...
- Print Setup...
- Print Preview
- Print... Ctrl+P**
- Print Active Item...
- Properties...
- 1 brjaja.sta
- 2 tezina_telad.sta
- 3 tezina nesilica.sta
- 4 nesilice.stw
- Exit

Add to Workbook Add to Report



- Workbook6*
- Basic Stat
- Descr
 - D
 - H



Primjer 2

- ◆ u razdoblju od 1.12. do 5.12.2005. zabilježili smo tjelesnu težinu 30 nesilica Leghorn pasmine na farmi XY nakon završetka nesenja, a prije mitarenja.
- ◆ pronalaženje podataka i analiza

Open [?] [X]

Look in: [Back] [Up] [New Folder] [Grid]

- History
- Desktop
- My Computer
- My Network P...

Statistika
brjaja.sta
tezina nesilica.sta
tezina_telad.sta

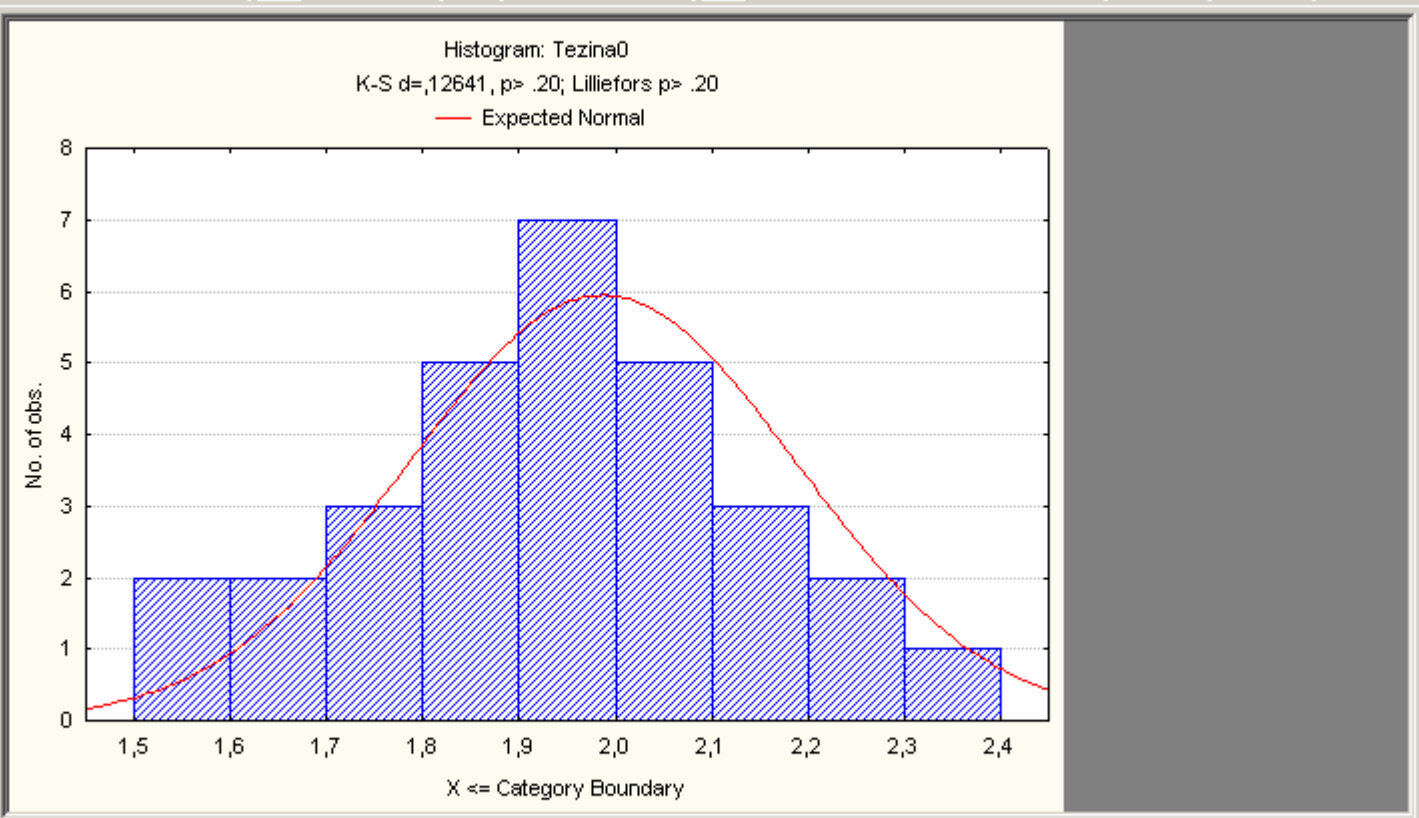
File name: [v]

Files of type: [v]

[Open] [Cancel]



- Workbook1*
- Basic Stat
- Descr
 - D
 - H



Primjer 3

- ◆ u razdoblju od 1.4. do 1.10.2004. bilježili smo kretanje enzima alanin-aminotransferaze u pasa pasmine zlatni retriver. Psi obuhvaćeni ispitivanjem bili su ženskog spola, u starosti 1 do 2 godine te s područja Zagrebačke županije i grada Zagreba. Izmjerena količina alanin-aminotransferaze u krvi izražena je u jedinicama na litru (U / l).
- ◆ pronalaženje i analiza podataka

Open [?] [X]

Look in: [Back] [Up] [New Folder] [Grid]

- History
- Desktop
- My Computer
- My Network P...

- Statistika
- ALT_pas.sta
- brjaja.sta
- tezina nesilica.sta
- tezina_telad.sta

File name: [Down Arrow]

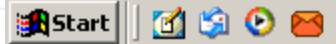
Files of type: [Down Arrow]

[Open] [Cancel]



For Help, press F1

CAP NUM REC



Add to Workbook ▾ Add to Report ▾

Arial | 10 | **B** *I* U | | |

Workbook1*

- Basic Stat
- Descr

Descriptive Statistics (Spreadsheet1)									
Variable	Valid N	Mean	Median	Mode	Frequency of Mode	Minimum	Maximum	Variance	Std.Dev.
ALTpas1	30	75,80000	83,00000	83,00000	5	21,00000	102,0000	533,2000	23,09112

- Workbook1*
- Basic Stat
- Descr
 - D
 - H

