



Statistika

1. vježbe



Statistica

- ◆ računalni program
- ◆ unos i obrada podataka

Primjer 1

- ◆ pratili smo proizvodnost 30 nesilica Leghorn pasmine na farmi XY promatrajući broj snesenih jaja u razdoblju od 1.1.2004. do 1.12.2004.
- ◆ unos podataka

broj nesilice	broj jaja	broj nesilice	broj jaja	broj nesilice	broj jaja
312	181	211	216	167	225
245	191	198	219	214	231
320	196	178	220	236	231
363	197	264	220	341	232
289	205	159	220	306	234
270	207	311	221	194	235
291	208	333	221	185	241
314	208	301	222	243	242
268	210	249	222	218	246
275	211	232	223	190	256



Shortcut (2) to sas.exe

Adobe PhotoDelu...

My Documents

Windows 2000 Professional

Novi Officeov dokument

Otvori Officeov dokument

Windows Update

WinZip

Click Me

Uninstall Click Me

Programs

Documents

Settings

Search

Help

Run...

Log Off akabalin...

Shut Down...

Accessories

Alati Microsoft Officea

BJ Printer

DivX

ImageJ

IncrediMail

Merck Home Edition

Norton Ghost 2001

Picture Package

ScreenSaver.com

Sophos Anti-Virus

Startup

WinZip

Acrobat Reader 5.0

IncrediMail

Internet Explorer

Microsoft Access

Microsoft Excel

Microsoft PowerPoint

Microsoft Word

Outlook Express

Adobe

Windows Media Player

Power Scan

STATISTICA 6

STATISTICA Electronic Manual

STATISTICA

Start

8:49



STATISTICA



STATISTICA
Release: 6

This product licensed to:
Stocarstvo-kabalin
Veterinarski fakultet
agr303b080207 ar

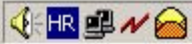
Copyright © StatSoft, Inc. 1994-2003.
All rights reserved. This program is
protected by US and international
copyright laws.



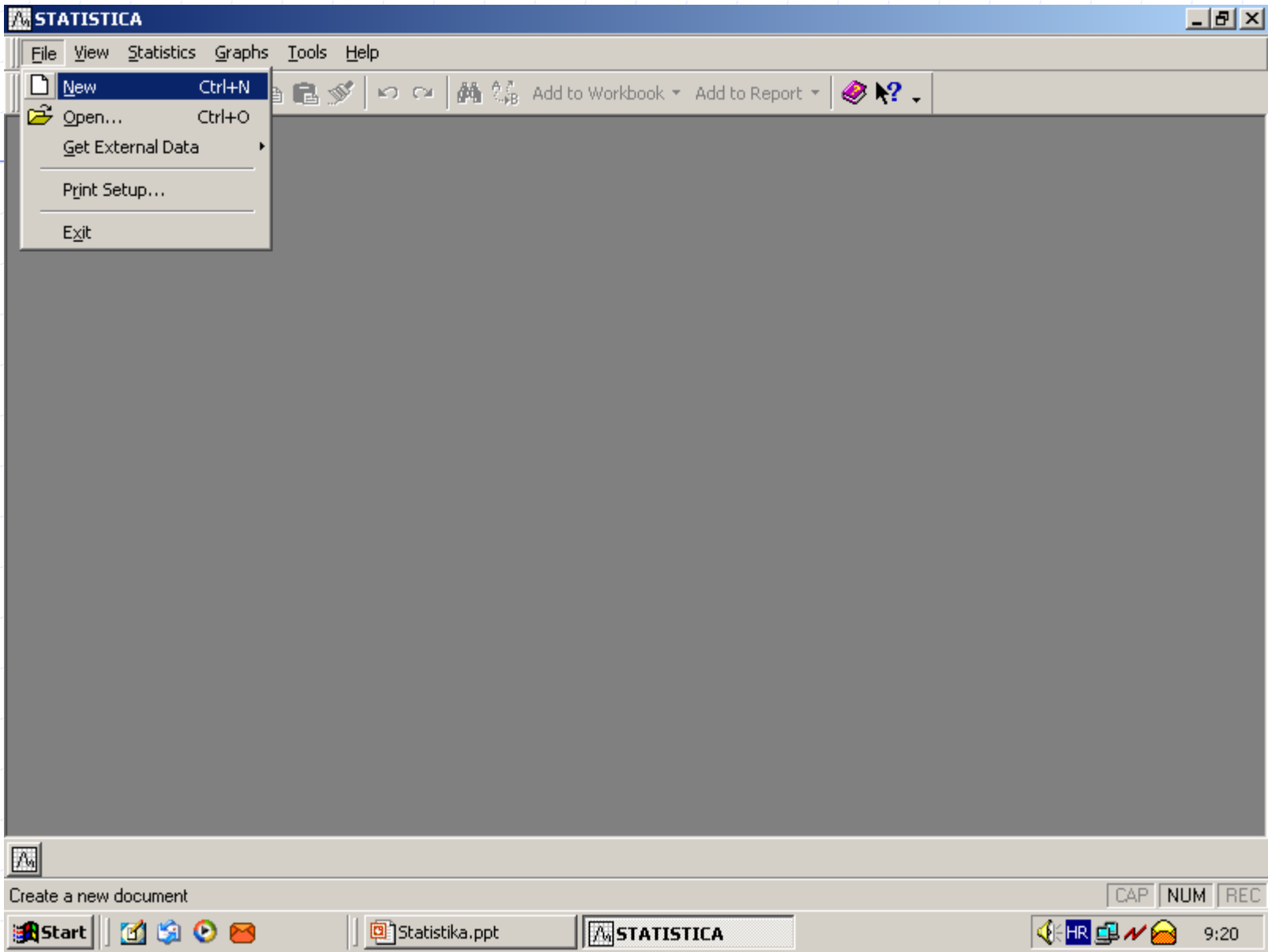
Start



Presentation1



8:50



Create New Document

- Spreadsheet
- Report
- Macro (SVB) Program
- Workbook

Number of variables: 1

Number of cases: 30

Case name length: 0

MD code: -9999

Default data type: Double

Variable length: 8

Placement

In a new Workbook

As a stand-alone window

Var name prefix: Brijaja

Var name start number: []

Display format

General	Decimal places: 0
Number	
Date	1000; -1000
Time	1.000; -1.000
Scientific	1000; (1000)
Currency	1.000; (1.000)
Percentage	
Fraction	
Custom	

Default

OK Cancel

STATISTICA - [Data: brjaja.sta (1v by 30c)]

File Edit View Insert Format Statistics Graphs Tools Data Window Help

Arial 10 B I U

	1
1	Brjaja1
1	181
2	191
3	196
4	197
5	205
6	207
7	208
8	208
9	210
10	211
11	216
12	219
13	220
14	220
15	220
16	221
17	221
18	222
19	222
20	223
21	225

Save As

Save in: statistika 3

History
Desktop
My Computer
My Network P...

File name: brjaja.sta

Save as type: STATISTICA Spreadsheet Files (*.sta)

Save Cancel

For Help, press F1

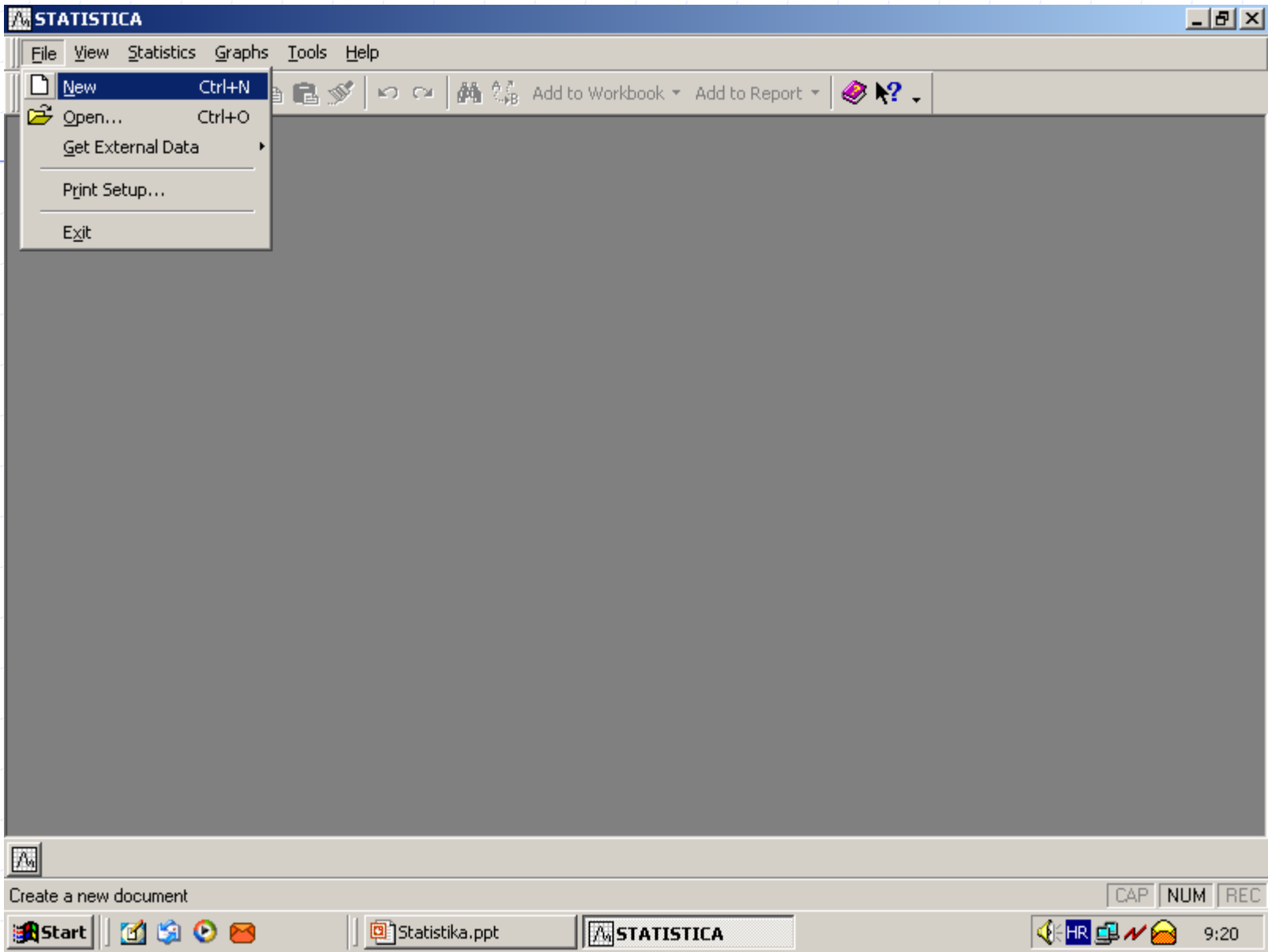
C1,V1 181 Sel:OFF Weight:OFF CAP NUM REC

Start Anamari... Statistika... Statistika... STATIS... 11:19

Primjer 2

- ◆ u razdoblju od 1.12. do 5.12.2005. zabilježili smo tjelesnu težinu 30 nesilica Leghorn pasmine na farmi XY nakon završetka nesenja, a prije mitarenja.
- ◆ unos podataka

broj nesilice	težina nesilice (kg)	broj nesilice	težina nesilice (kg)	broj nesilice	težina nesilice (kg)
312	1,8	211	1,9	167	2,0
245	1,7	198	2,1	214	2,2
320	1,6	178	2,2	236	2,3
363	1,6	264	2,0	341	2,1
289	1,8	159	2,0	306	2,1
270	1,7	311	1,9	194	2,3
291	1,8	333	2,0	185	2,2
314	1,9	301	2,1	243	2,0
268	2,0	249	1,9	218	2,4
275	1,9	232	2,0	190	2,1



Create New Document

Spreadsheet Report Macro (SVB) Program Workbook

Number of variables: 1
Number of cases: 30
Case name length: 0
MD code: -9999
Default data type: Double
Variable length: 8

Placement:
 In a new Workbook
 As a stand-alone window

Var name prefix: Tezina
Var name start number: []

Display format:

General	Decimal places: 0
Number	
Date	1000; -1000
Time	1.000; -1.000
Scientific	1000; (1000)
Currency	1.000; (1.000)
Percentage	
Fraction	
Custom	

Default

OK Cancel

Primjer 3

- ◆ u razdoblju od 1.4. do 1.10.2004. bilježili smo kretanje enzima alanin-aminotransferaze u pasa pasmine zlatni retriver. Psi obuhvaćeni ispitivanjem bili su ženskog spola, u starosti 1 do 2 godine te s područja Zagrebačke županije i grada Zagreba. Izmjerena količina alanin-aminotransferaze u krvi izražena je u jedinicama na litru (U / l).
- ◆ unos podataka

Tetovir	ALT (U/I)	Tetovir	ALT (U/I)	Tetovir	ALT (U/I)
1265	21	8885	82	7106	87
3468	25	7888	82	6107	87
2070	28	2489	82	1109	93
4573	45	3591	82	9110	93
3574	45	6494	83	2111	98
7575	56	7596	83	4114	98
6578	56	8297	83	8116	99
2480	70	9100	83	2118	100
1381	70	8101	83	5121	101
1783	70	2104	87	4124	102

Create New Document

Spreadsheet | Report | Macro (SVB) Program | Workbook

Number of variables: 1
Number of cases: 30
Case name length: 0
MD code: -9999
Default data type: Double
Variable length: 8

Placement
 In a new Workbook
 As a stand-alone window

Var name prefix: ALTpas
Var name start number: []

Display format

General	Decimal places: 0
Number	1000; -1000
Date	1.000; -1.000
Time	1000; (1000)
Scientific	1.000; (1.000)
Currency	
Percentage	
Fraction	
Custom	

Default

OK Cancel



For Help, press F1

CAP NUM REC



Anamari... Statistika... Statistika... STATIS...

HR 11:14

